



2019 State of the County



Voting Equipment



New voting equipment and high-speed scanners purchased for \$2.5 million



Replaced 17 year old equipment

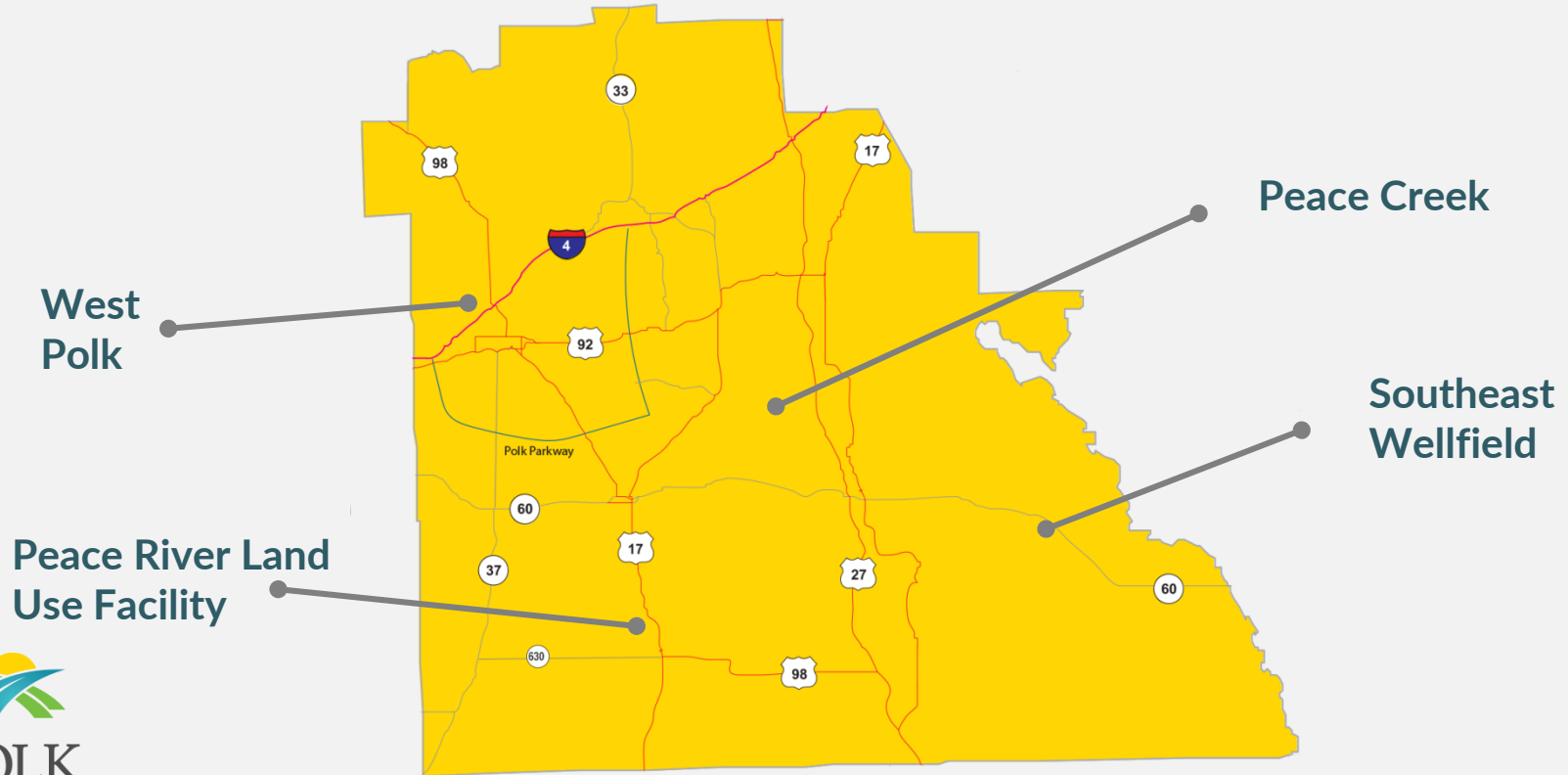


3 separate state-mandated recounts of 247,000 ballots



Met all deadlines with accurate results because of new equipment

PRWC Projects



Other Accomplishments



New Stations

- Lake Marion Creek (Poinciana)
- Mulberry



Planned Stations

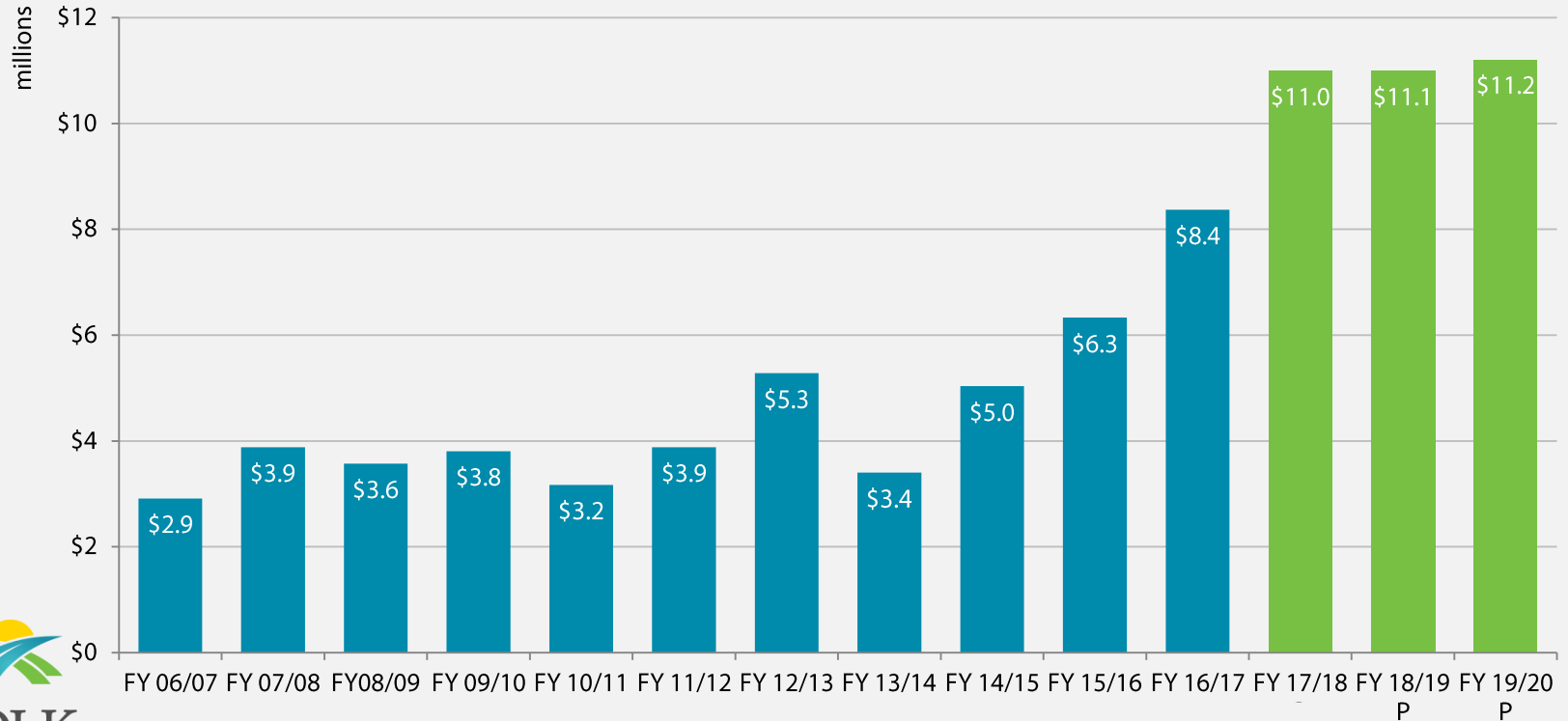
- Land acquired for Frostproof, Nalcrest and Kathleen (Sleepy Hill)
- Loughman



Florida Poly Corridor



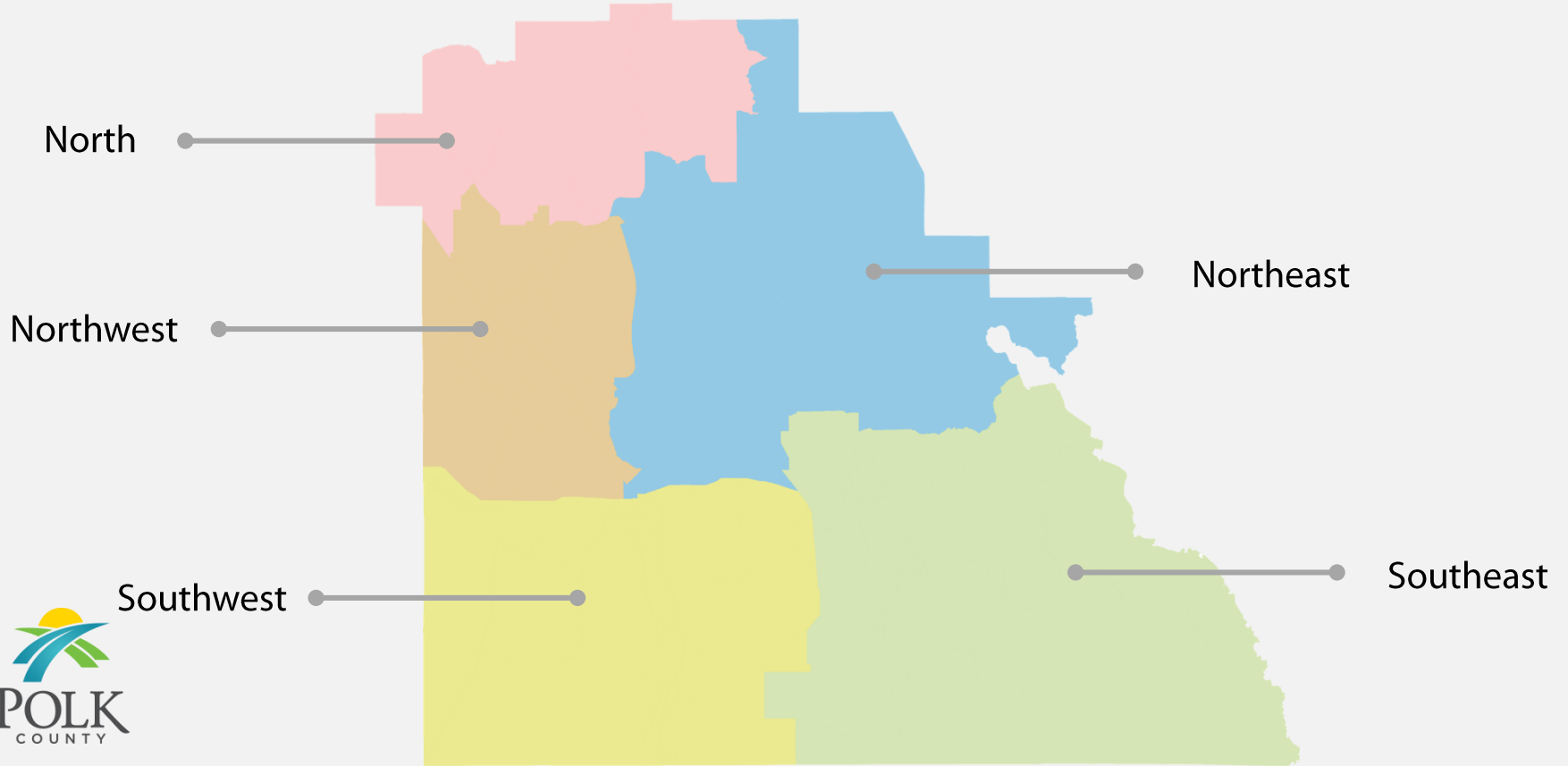
Outside Inmate Medical Costs





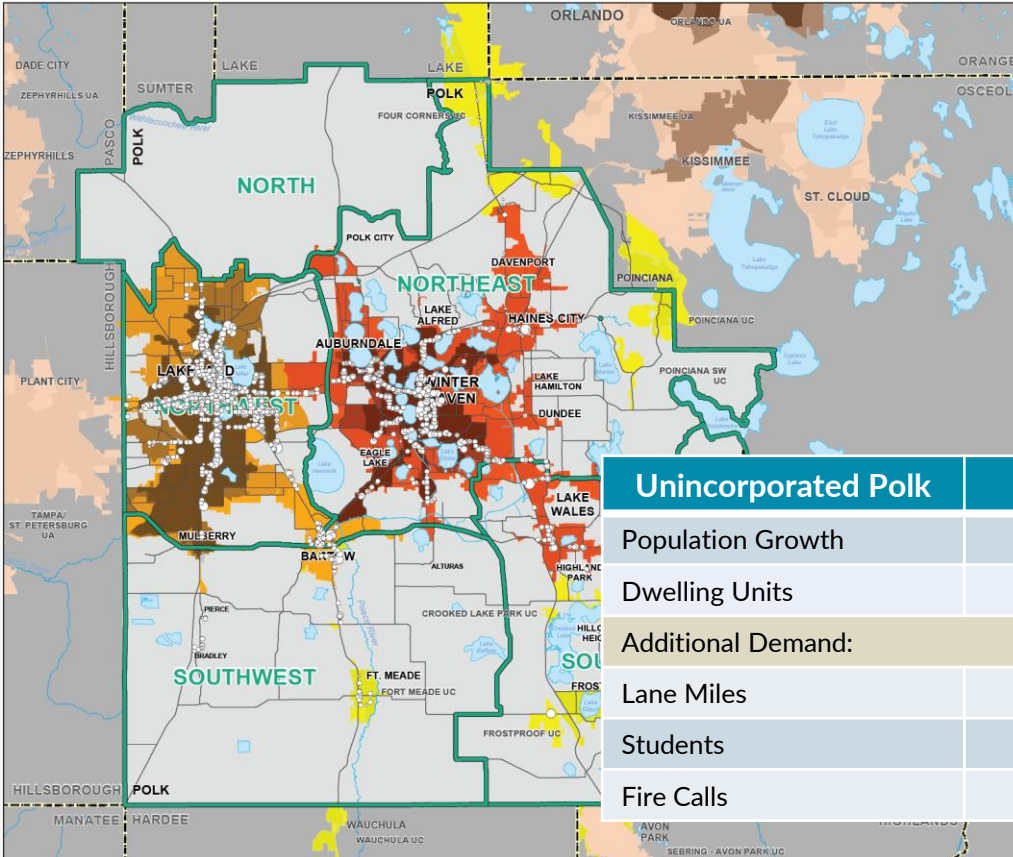
Goal: Implement new rates effective January 1, 2020

Polk County Sub Areas



Additional Demands for Services

2018 - 2040
Population > 880,000



Unincorporated Polk	N	NE	NW	SE	SW	Growth
Population Growth	3,603	118,109	60,711	19,582	4,622	206,627
Dwelling Units	1,716	56,242	28,910	9,325	2,201	98,394
Additional Demand:						
Lane Miles	0	226	62	36	0	324
Students	669	21,940	11,278	3,638	859	38,384
Fire Calls	756	24,769	12,732	4,107	969	43,333

I-4 ULTIMATE

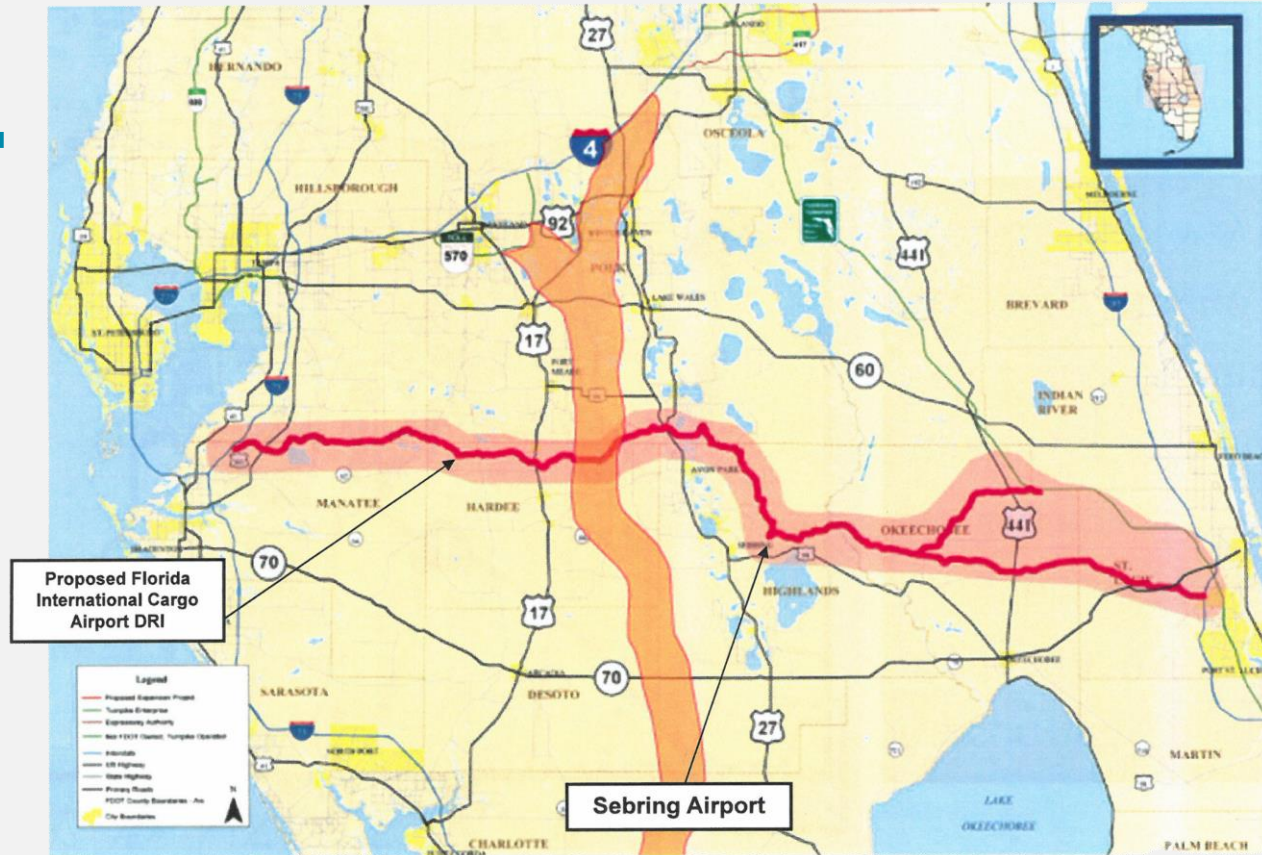


I-4 BEYOND ULTIMATE



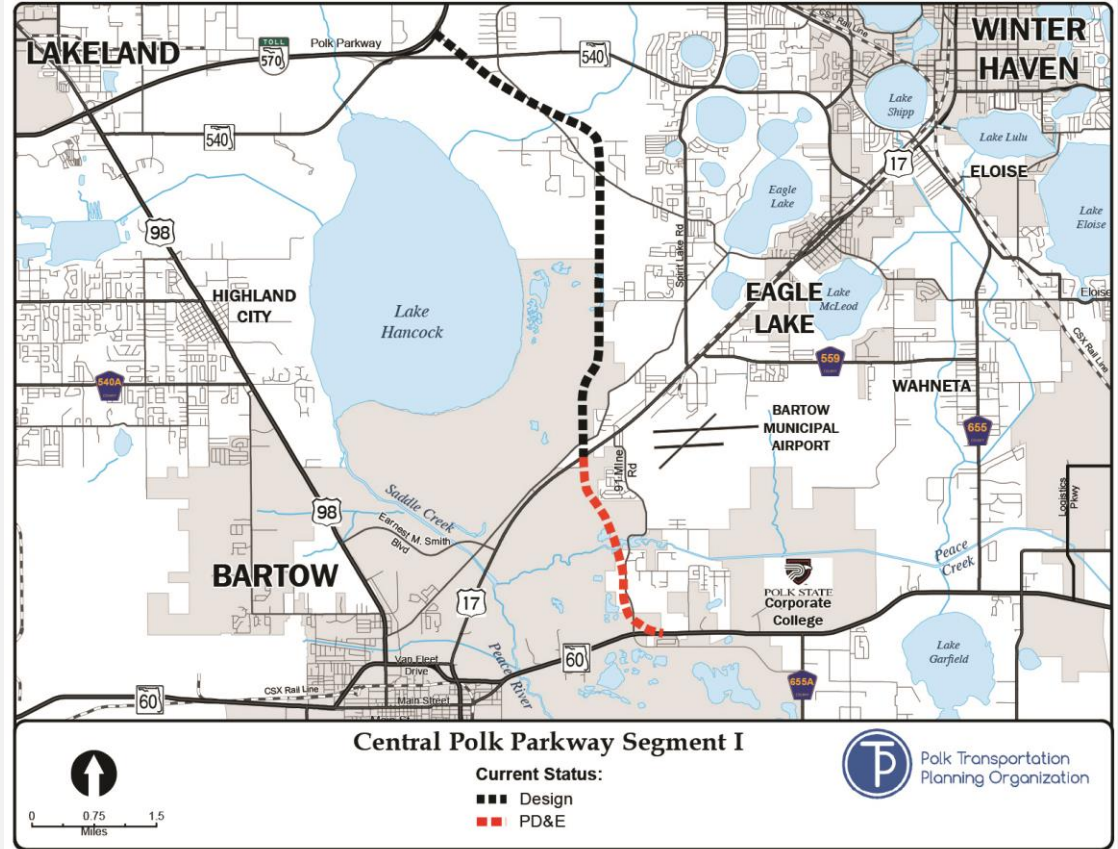
NEW STATEWIDE CORRIDORS

Heartland Coast to Coast and
Heartland Parkway



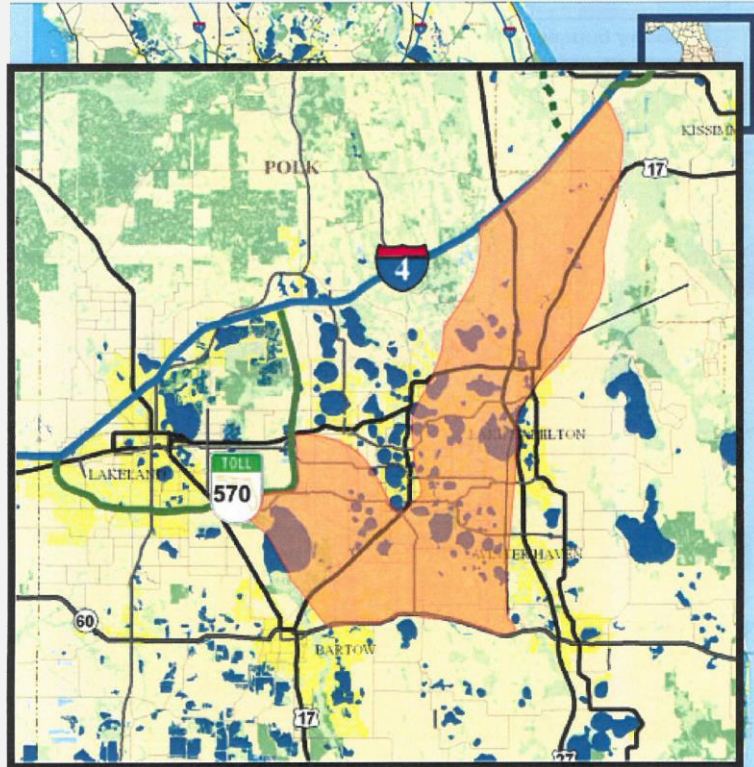
Regional Transportation Projects

CENTRAL POLK PARKWAY



HEARTLAND PARKWAY

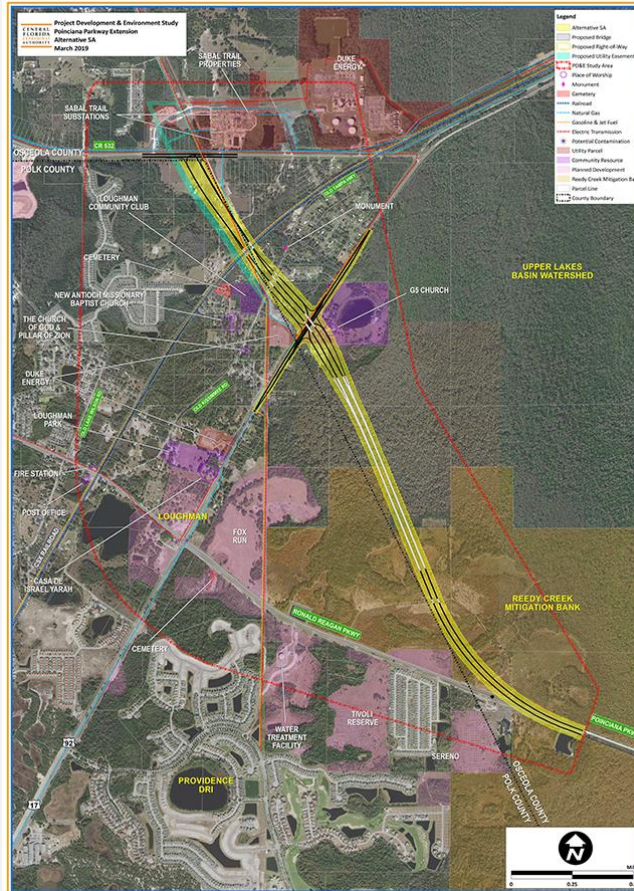
As currently proposed, the Heartland Parkway will provide connections to the Polk Parkway and SR 429 (Orlando Western Beltway)



Heartland Parkway Northern Limits

Regional Transportation Projects

POINCIANA PARKWAY EXTENSION



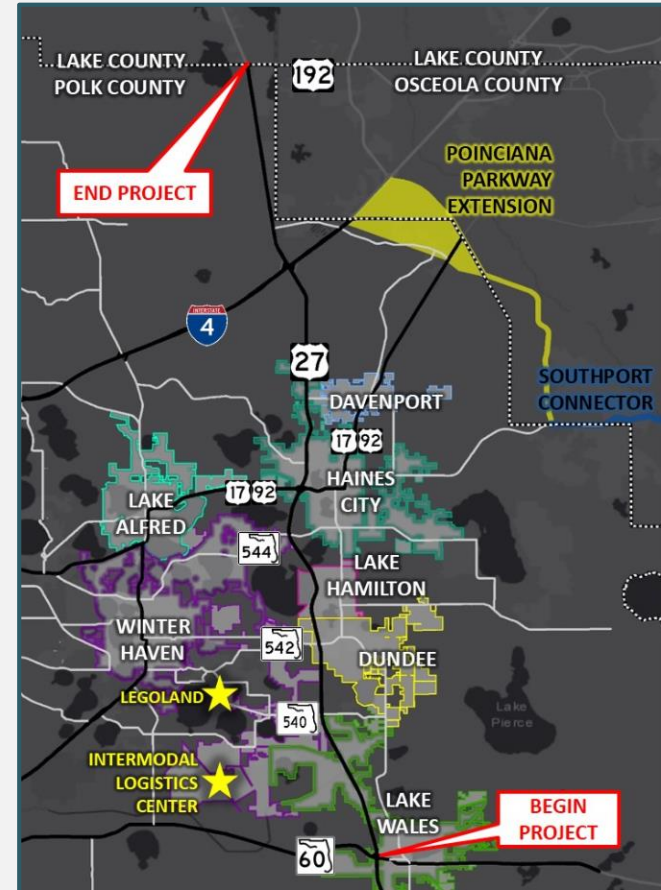
US 27 Mobility Study

US 27 has the highest traffic volume of any arterial road (non-interstate):

58,200 2017 AADT

Potential Strategies:

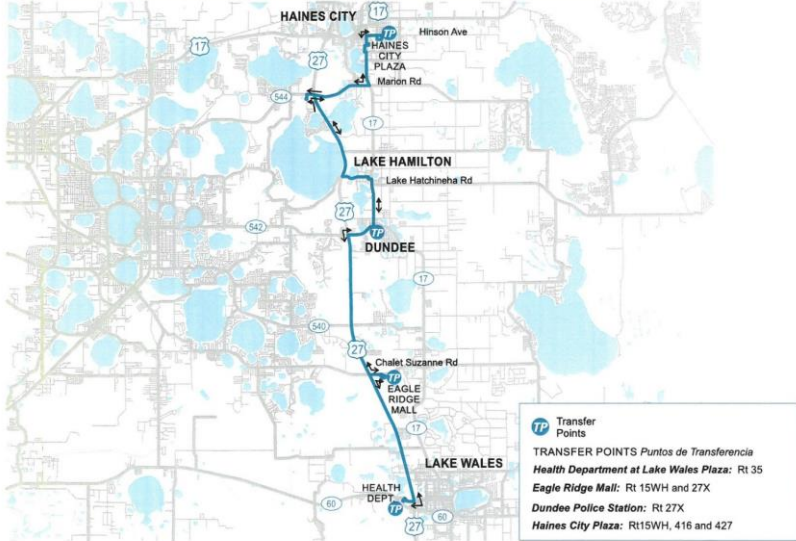
- ▶ Regional Connection to Poinciana Parkway
- ▶ Parallel Reliever Routes, e.g., CR 17 and CR 557
- ▶ Traffic Operations
- ▶ Improved Connectivity
- ▶ Public Transportation



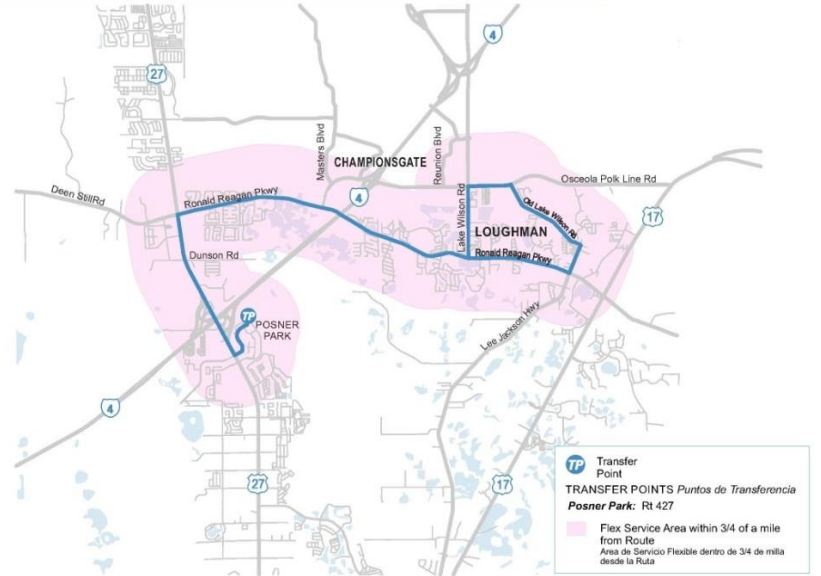
FUNDED CIP PROJECTS

Project:	(millions)
Lake Wilson (CR 54 - CR 532)	\$17.8
West Pipkin (Medulla – SR 37)	\$51.2
CR 557 (US 17/92 – I-4)	\$82.0
Marigold (CR 580 - Palmetto)	\$26.7
Cypress Parkway (Solivita Blvd. to Poinciana Parkway)	<u>\$20.5</u>
TOTAL:	\$198.2

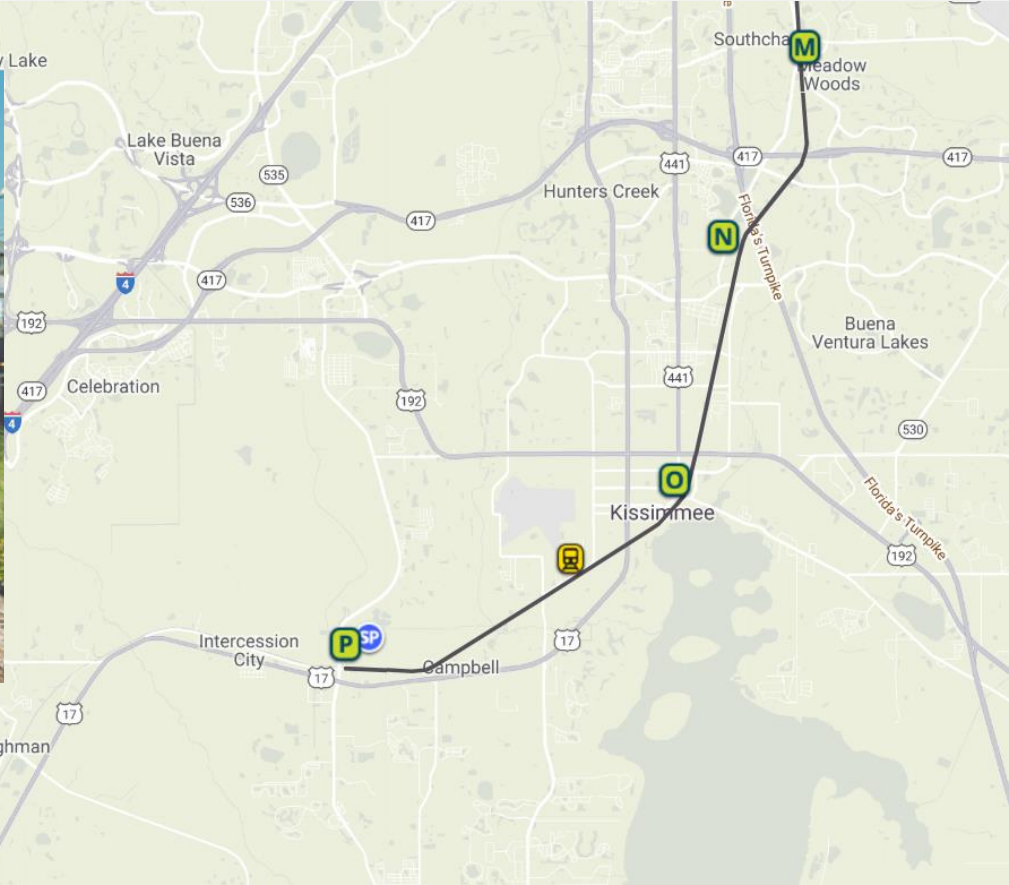
LAKE WALES/HAINES CITY EXPRESS



LOUGHMAN FLEX



SunRail



ORLANDO EXTENSION



ORLANDO EXTENSION

- Brightline will be first rail system to serve Orlando International Airport's new Intermodal Terminal Facility
- Seamless connection to air, bus, rental cars, parking and ground transportation
- Additional travel option for tourists from South Florida to visit Orlando
- Planned 82-acre Vehicle Maintenance Facility will employ more than 100 people



Regional Transportation Projects

CONNECTING ORLANDO TO TAMPA



ORLANDO EXTENSION

Connecting SunRail
to Orlando
International Airport

The proposed alignment would provide a rail connection from SunRail to the airport via the Meadow Woods Station.





Questions?

Text questions to 863.512.2026