



2022  
State of the  
County



POLK  
COUNTY



# THANK YOU TO OUR SPONSORS





2022  
State of the  
County



POLK  
COUNTY



Martha Santiago, Ed.D.  
Chair  
Polk County Board of  
County  
Commissioners



Bill Beasley  
County Manager  
Polk County



Sara Beth Wyatt  
Chair  
School Board,  
Polk County Public  
Schools



Frederick Heid  
Superintendent  
Polk County Public  
Schools



Dr. Joy Jackson  
Director  
Florida Department of  
Health in Polk County





# Text Questions

# 863-888-2911







2022  
State of the  
County



POLK  
COUNTY

# Themes

---

-  Recovery from COVID Pandemic and Economic Development
-  Polk Today: Quick View
-  Growth and Planning
-  Challenges and Actions



---

**State of the  
County is  
Strong!**

# COVID 19 Recovery

## Pandemic – County affairs did not stop

State of the County



United States®  
**Census  
2020**

**We keep your data  
like you keep your  
kids. Safe and secure.**

All 2020 Census responses are kept confidential and private. It's the law. Your responses cannot be shared and cannot be used against you by any government agency or court in any way.

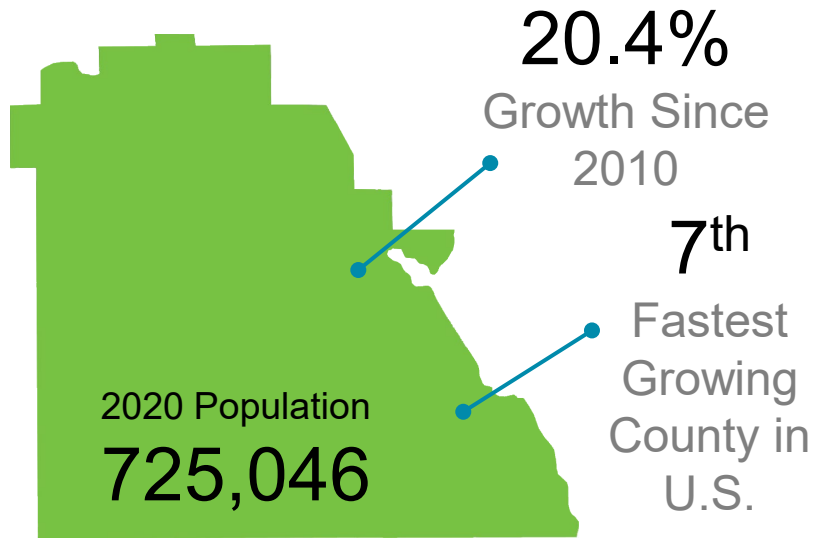
**2020Census.gov**



- ✓ County offices remained open for business
- ✓ Census, elections, economic shutdown
- ✓ Growth - increased service needs
- ✓ Increase in public health services

# Central Florida Development Council (CFDC)

## Polk By the Numbers



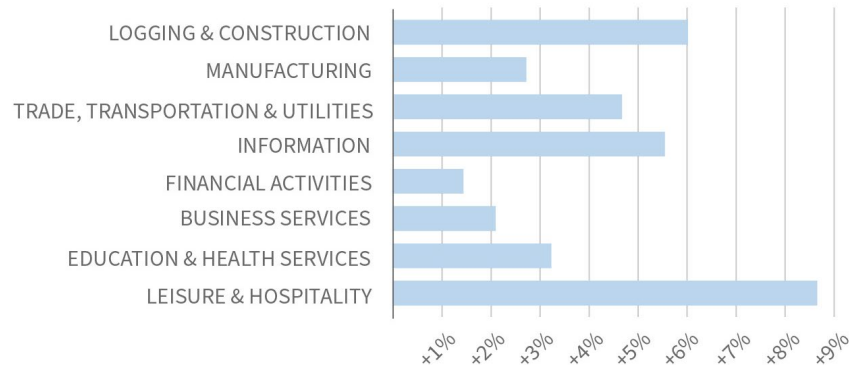
**3<sup>RD</sup>**  
FASTEST ANNUAL  
JOB GROWTH RATE  
IN THE STATE

IN TRADE, TRANSPORTATION AND  
UTILITIES INDUSTRIES, FLORIDA DEO



### COUNTY JOB GROWTH BY INDUSTRY

2020-2021, FLORIDA DEO



**3.7%** UNEMPLOYMENT RATE

# Central Florida Development Council (CFDC)

Economic Development over the past five years

## Square Footage

6,394,915 new & occupied square footage

## Capital Investment

\$1.15 billion in new capital investment

## New Jobs

6,687 total jobs

**NUCOR**<sup>®</sup>  
FLORIDA



**Publix**<sup>®</sup>



amazon air  




# Central Florida Development Council (CFDC)

## Considerations

- ✓ Transportation infrastructure is critical to Polk competitiveness. **High-speed rail** will further connect our region to central and south Florida.
- ✓ **Water capacity** is becoming a threat as larger manufacturing projects consider the area.
- ✓ As the demand for residential increases, altering land use **from industrial to residential** will limit future employment viability and tax revenue.
- ✓ **Broadband capacity** will continue to become more important to support online workers and educational needs – Fiber & 5G.



# COVID 19 Recovery

## Economic Development: Tourism & Sports Marketing

### JUN 2020 – FEB 2021



- Recovery and increased market share
- Set all-time annual sales record



### MARCH 2020

- Record month
- Healthy reserves



### MAR 2021 – FEB 2022

- 12 consecutive record months
- February 2022 setting another all time “Monthly Sales Record” of **\$2.15 million**

# Notable Highlights

## Economic Development: Tourism & Sports Marketing

PCTSM is projecting **\$175 million in economic impact** from **25 events in 43 different sports** this fiscal year

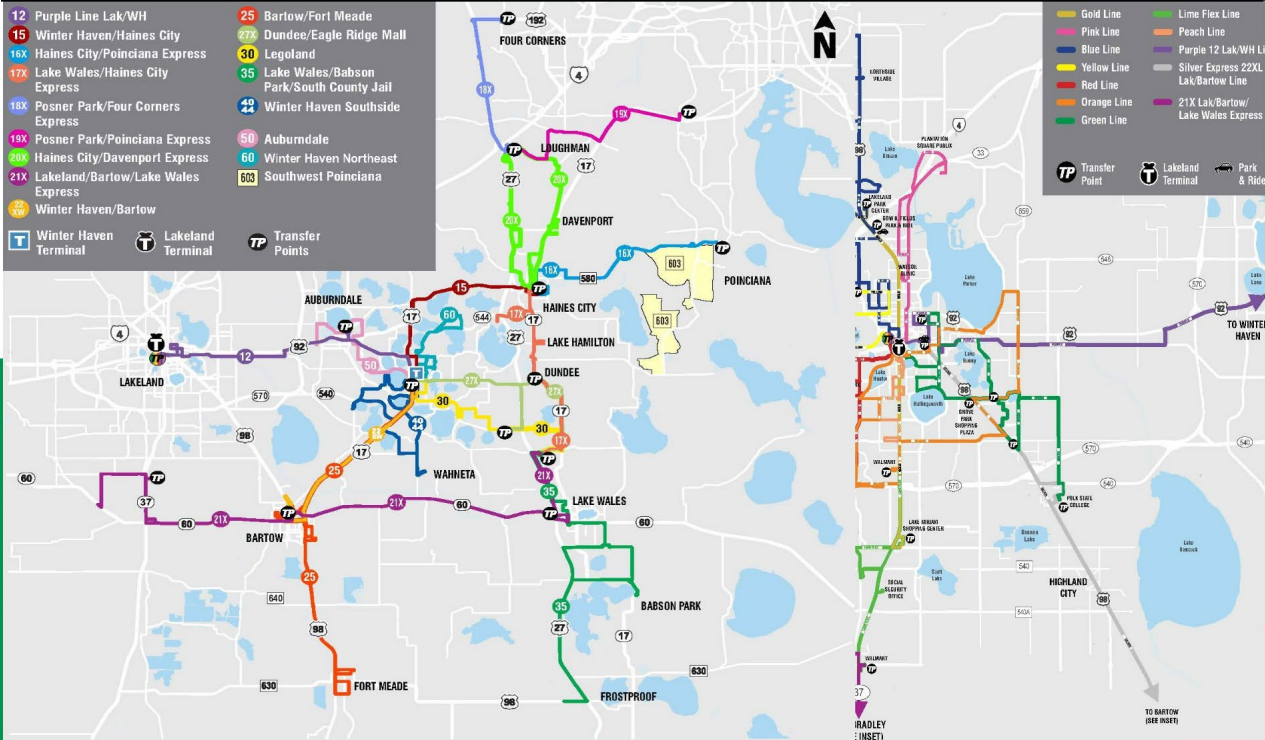
- **Northeast Regional Park Baseball Complex** was completed in February
- Polk County's newest attraction, **Peppa Pig**, opened in February
- New Championship **Ski Lake and USA Water Ski and Wakesports National Training Center** will be finished in July
- New **Championship Stadium** at Lake Myrtle and will be complete in October
- Groundbreaking for new **Chain of Lakes Baseball Complex** in Spring 2023
- PCTSM and **Lakeland Regional Airport** are close to "LANDING" a commercial airline
- **Eight hotels** are in the pipeline



CitrusConnection

PROGRESS IN MOTION

# 29 Routes County-Wide



# Fixed Route: 558,237 Trips

FY 2020/21



ADA

43,573  
TRIPS  
FY 20/21

ADA/Paratransit is a shared ride service providing transportation throughout our area.

ADA certified lift-equipment and our operators are available to provide boarding assistance. A one-way fare is \$2



Transportation Disadvantaged

17,440  
TRIPS  
FY 20/21

This special program provides free or reduced-price bus passes to physically, mentally, emotionally or economically disadvantaged individuals.

Citrus Connection is the Community Transportation Coordinator (CTC).

# Polk County Today

602,095

2010 Census

725,046

2020 Census

753,520

July 1, 2021  
(U.S. Census Bureau)



4<sup>th</sup> Largest County in Florida (2,011 square miles)

- Rhode Island - 1,214 sq. miles
- Delaware - 1,982 sq. miles



Population Rank

- North Dakota 770,026
- **Polk County 753,520**
- Alaska 724,537
- District of Columbia 714,153
- Vermont 623,251
- Wyoming 581,075

20



# Polk County Today

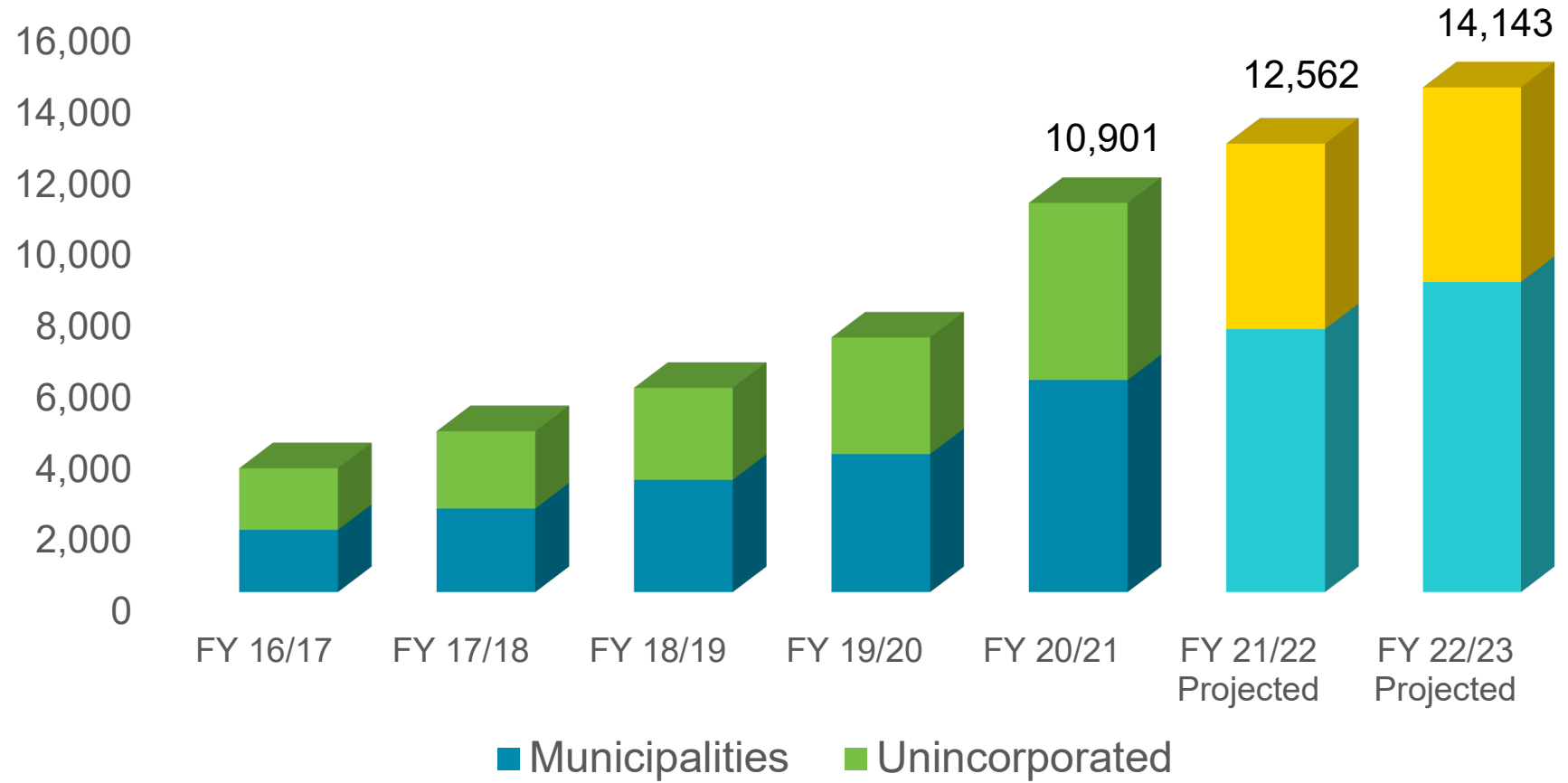
## 2021 U.S. Census Estimate – Top 10 Counties



3,143 counties in the U.S.

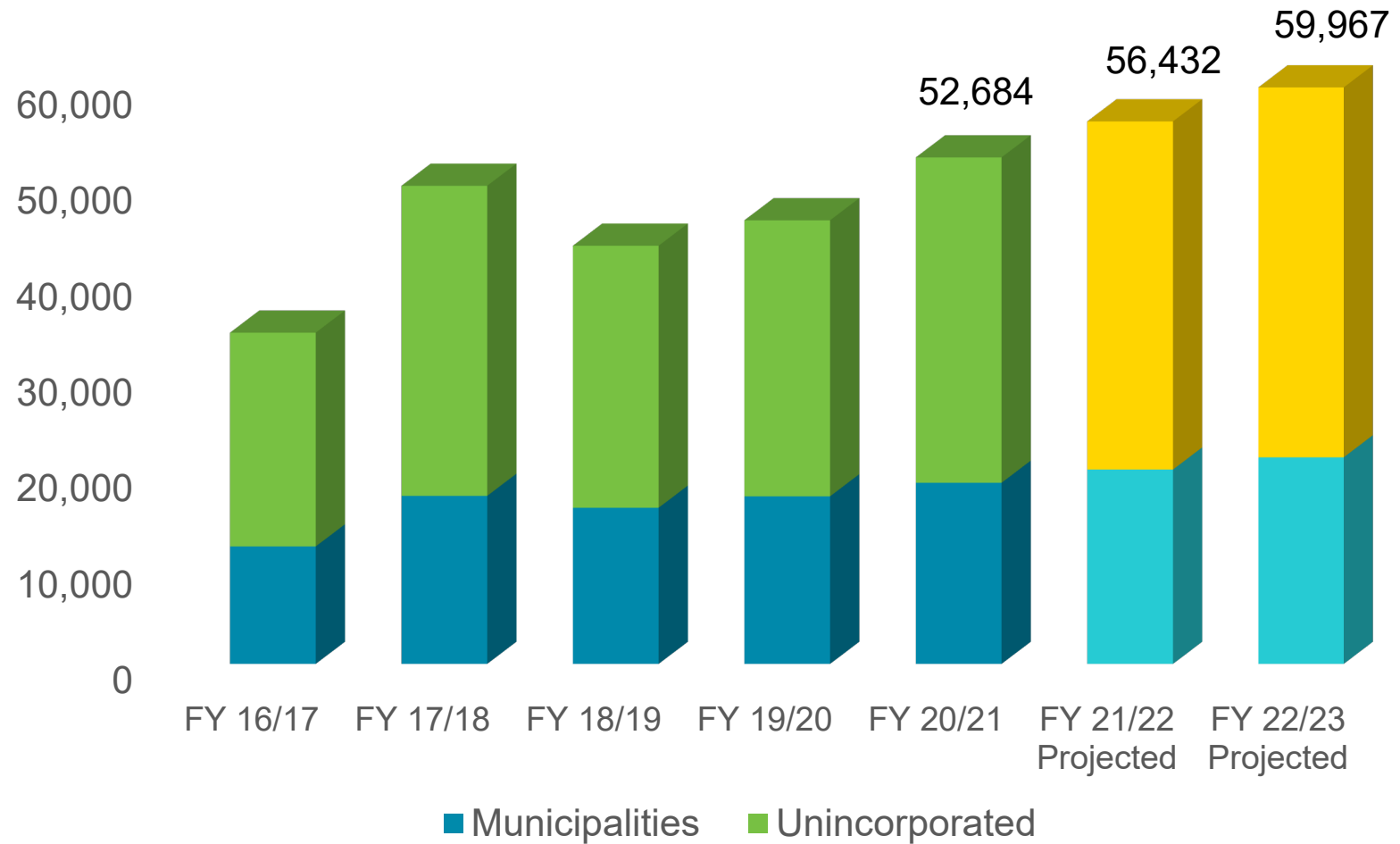
Rank	State	County	April 1, 2020 (Est. Base)	July 1, 2020	July 1, 2021	Numeric Growth
1	Arizona	Maricopa County	4,420,568	4,438,342	4,496,588	58,246
2	Texas	Collin County	1,064,465	1,073,149	1,109,462	36,313
3	California	Riverside County	2,418,185	2,422,764	2,458,395	35,631
4	Texas	Fort Bend County	822,779	828,632	858,527	29,895
5	Texas	Williamson County	609,017	615,266	643,026	27,760
6	Texas	Denton County	906,422	913,900	941,647	27,747
7	Florida	Polk County	725,046	729,233	753,520	24,287
8	Texas	Montgomery County	620,443	624,938	648,886	23,948
9	Florida	Lee County	760,822	764,679	787,976	23,297
10	Utah	Utah County	659,399	663,143	684,986	21,843

# Single-Family Residential Building Permits



# Total Building Permits\*

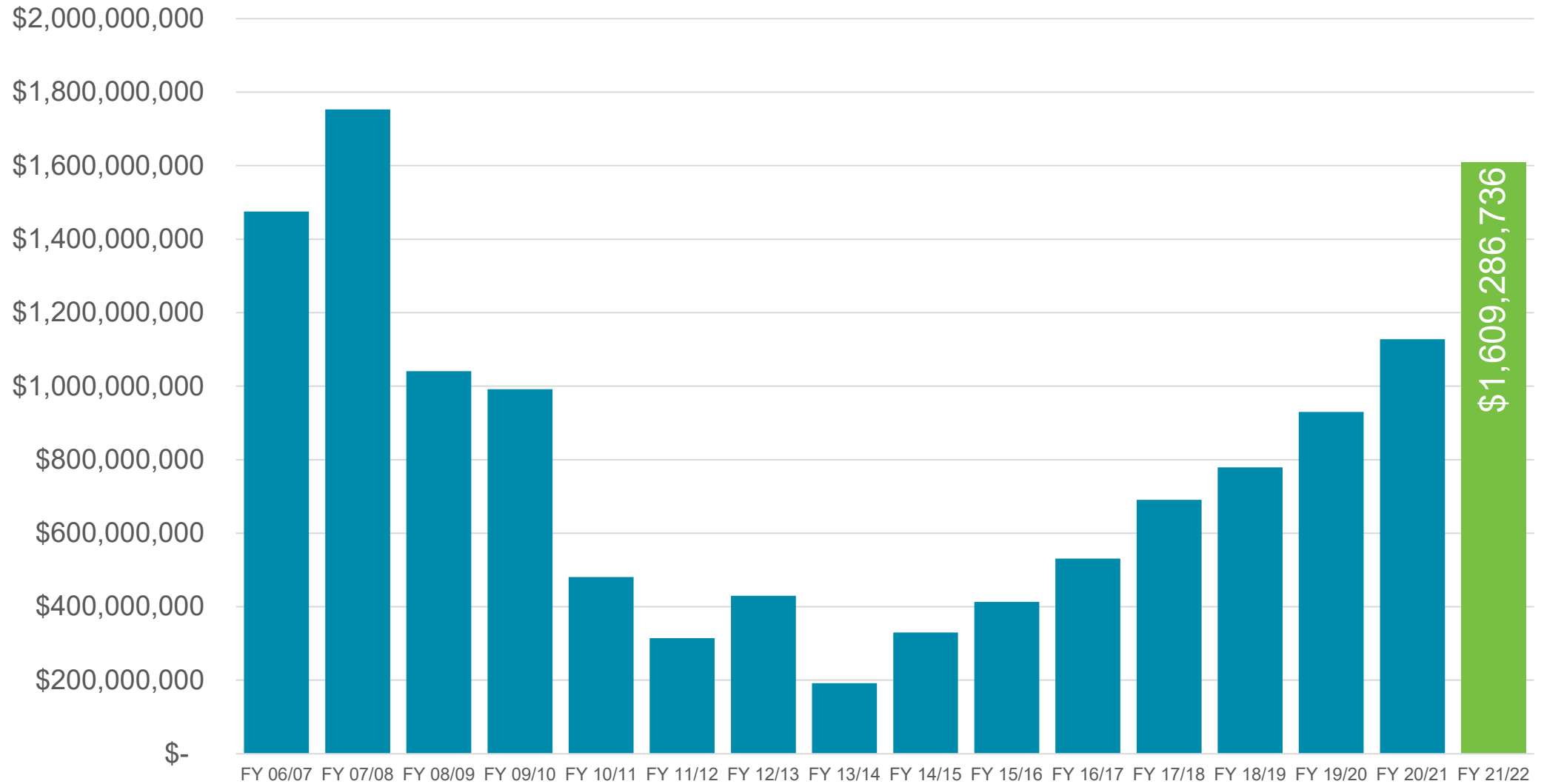
State of the County



\*Haines City and Winter Haven not available

# Countywide New Construction





## Residential and Commercial

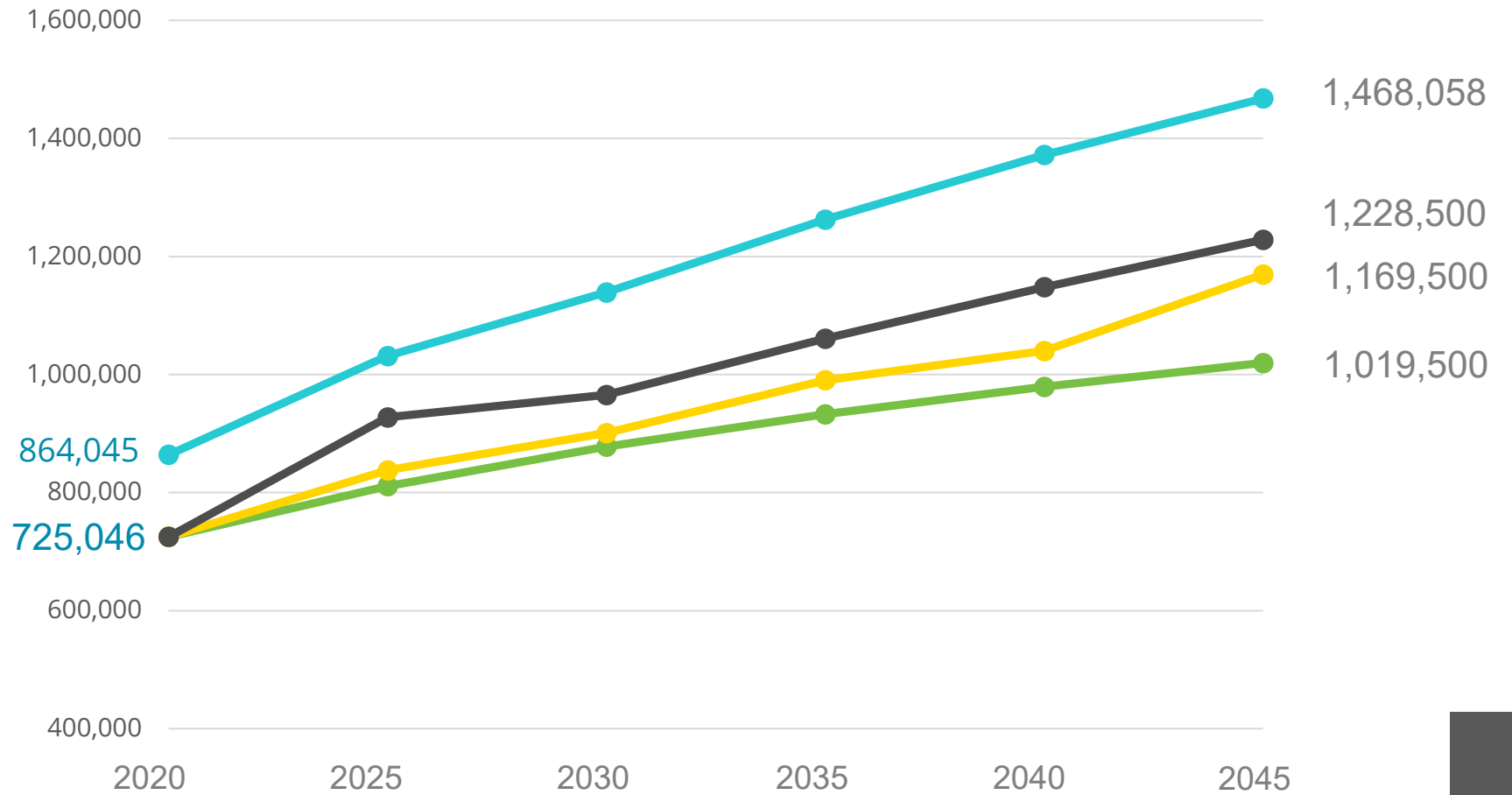




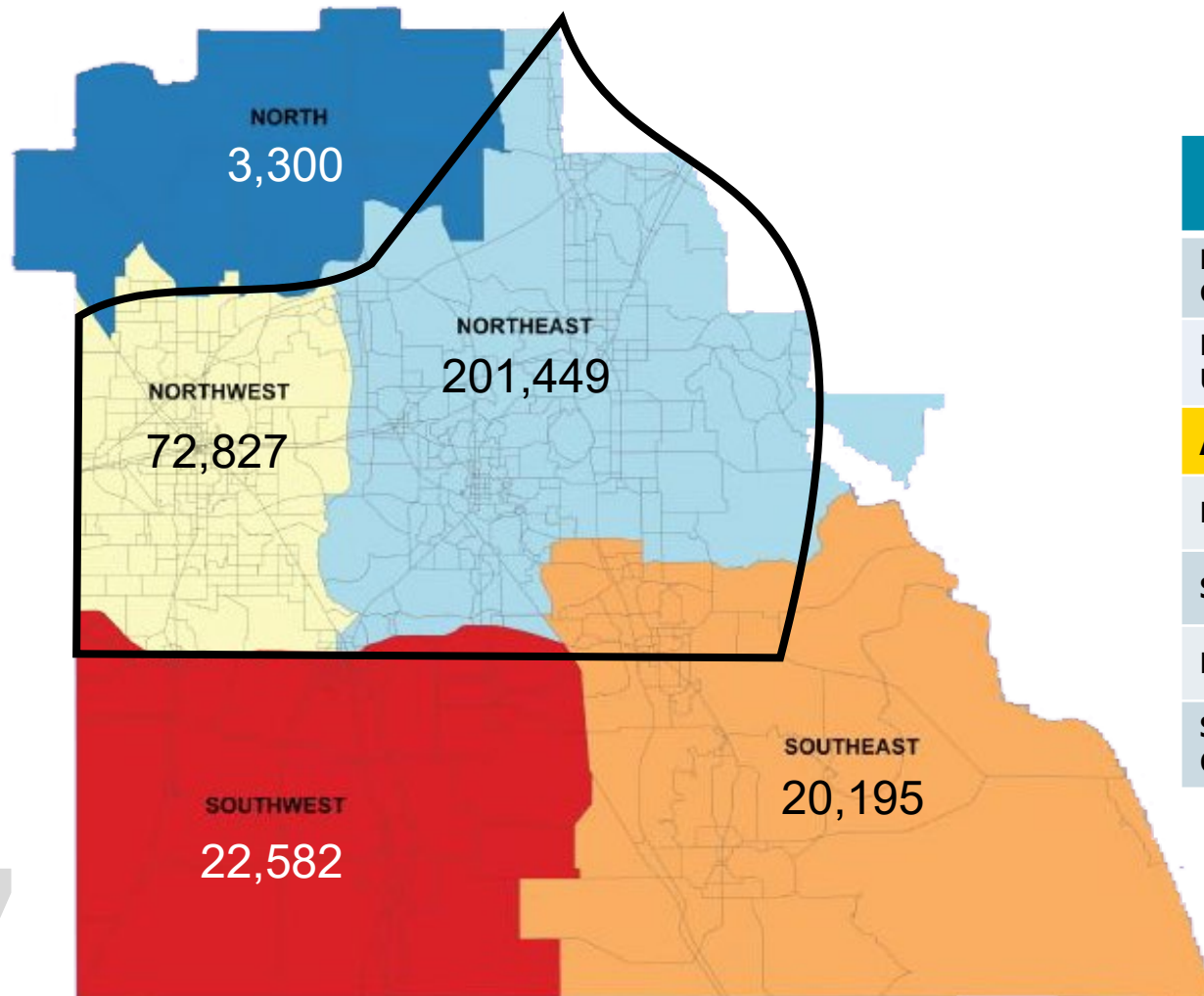
# 2045 Forecast

# Population Growth Forecast

-  Assumed Forecast w/seasonal and tourists
-  BEBR High
-  Assumed Forecast
-  BEBR Medium



# Additional Demand for Services by 2045

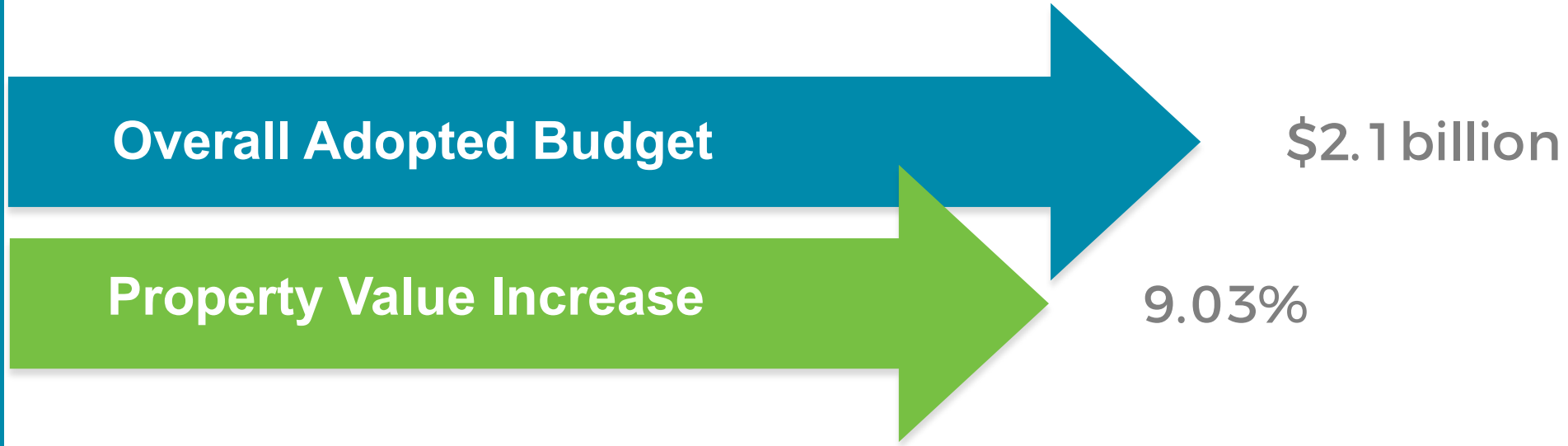


Planning Areas	N	NE	NW	SE	SW
Population Growth	3,300	201,449	72,827	20,195	22,582
Dwelling Units	1,348	91,361	33,584	9,059	10,196
<b>Additional Demand:</b>					
Lane Miles	0	204	56	17	3
Students	569	38,554	14,172	3,823	4,303
Fire Calls	417	25,232	9,122	2,529	2,828
Sheriff Calls	500	31,489	11,496	2,999	3,499

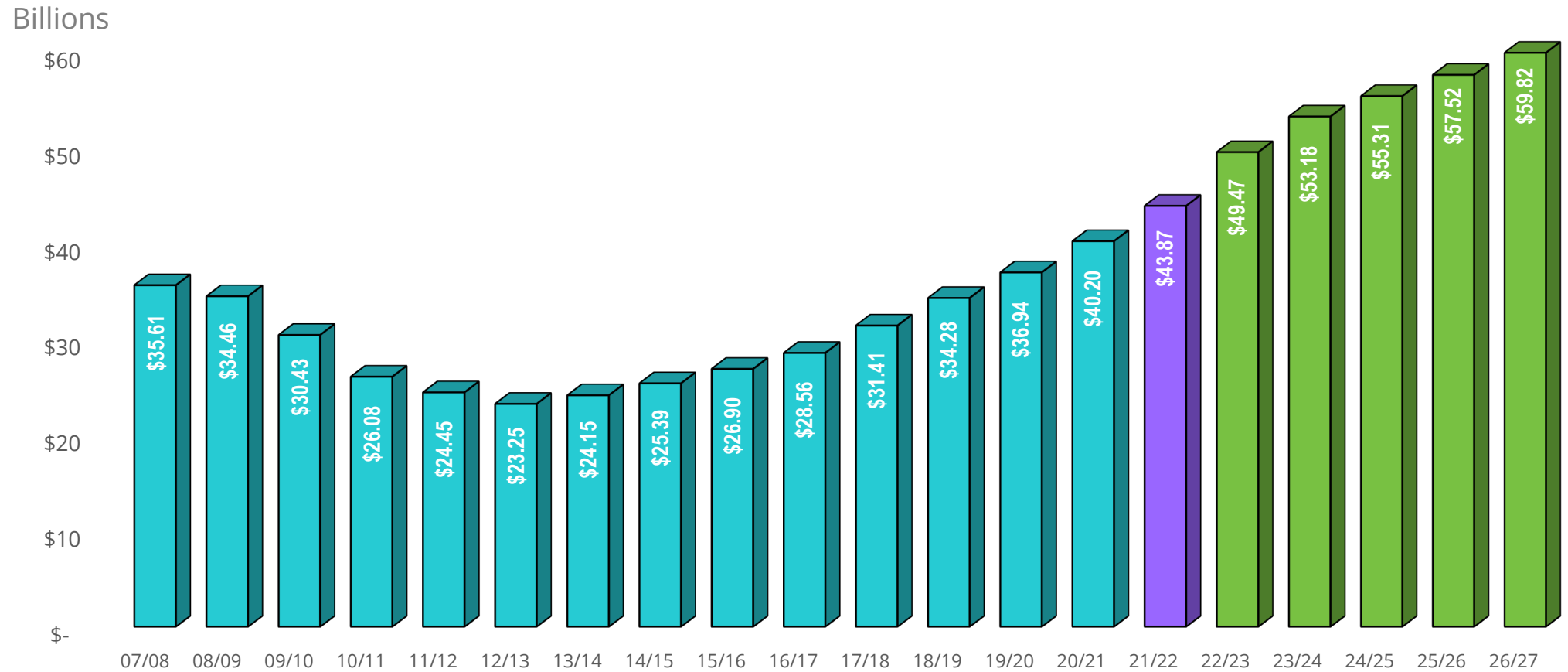
# Budget Overview



# FY 2021/22 At A Glance



# Countywide Final Taxable Values





# CARES and ARP Allocations

# 2020 Polk CARES Allocation

## April 2020

<b>Community Health</b>	<b>\$12.3 million</b>
-------------------------	-----------------------

- Testing, Hospitals, Clinics

<b>Individual/Household</b>	<b>\$68.3 million</b>
-----------------------------	-----------------------

<b>Small Business</b>	<b>\$19.3 million</b>
-----------------------	-----------------------

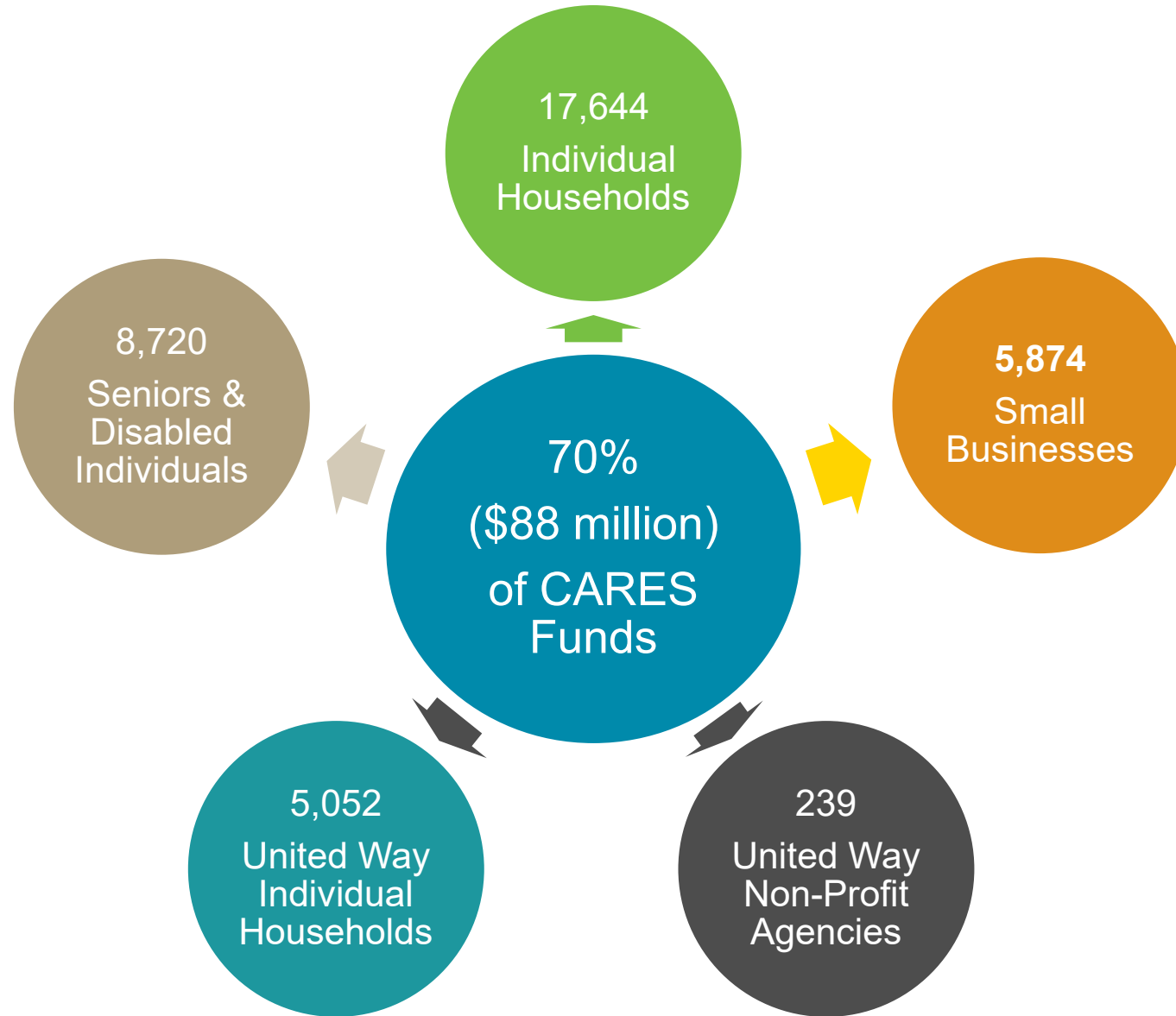
<b>Local Government</b>	<b>\$26.5 million</b>
-------------------------	-----------------------

- BoCC, Cities, Elected Officials, Schools, Chambers

<b>TOTAL</b>	<b>\$126.4 Million</b>
--------------	------------------------

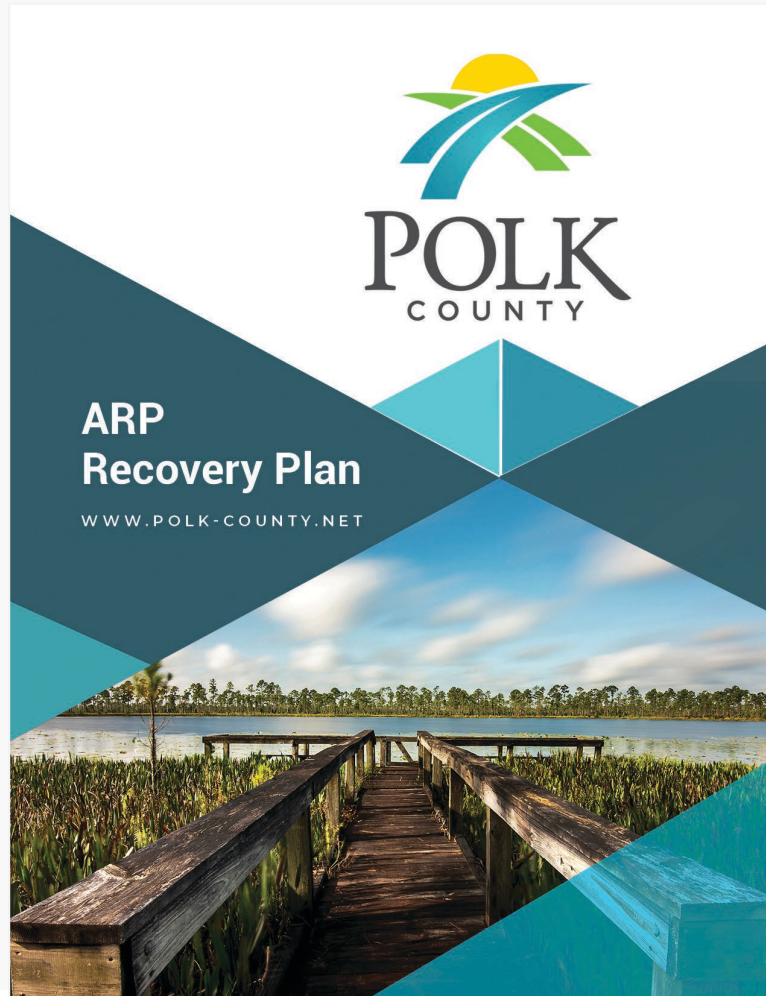


# 2020 Polk CARES Distribution



# American Rescue Plan Act (ARP) Funding

May 2021



Polk received \$140.8 million for:

- COVID-19 response efforts
- Replacing lost revenue
- Supporting economic stabilization
- Investments in infrastructure



All funds allocated by 2024 and spent by 2026



Additional funding for rental and utility assistance

# American Rescue Plan Act (ARP) Funding

“Buckets”	Infrastructure Project	Program Other	TOTAL	% of Funds
Government Infrastructure	\$82.7	\$0	\$82.7	59%
General County Impacts & Mitigation	\$41.7	\$5.8	\$47.5	34%
Community, Public Health, Small Business	\$0	\$10.5	\$10.5	7%
<b>TOTAL</b>	<b>\$124.4</b>	<b>\$16.3</b>	<b>\$140.7</b>	<b>100%</b>
<b>% of TOTAL</b>	<b>88%</b>	<b>12%</b>	<b>100%</b>	

# Emergency Rental Assistance

## January and May 2021



### ERA 1 - \$21.9 million received

- 3,178 applications approved
- \$18.3 million paid out



### ERA 2 - \$17 million

- \$6 million received
- To be distributed after ERA 1

## April 2022



### Mortgage Assistance - \$979K

- Approved by Board on April 5, 2022

# American Rescue Plan Act (ARP) Funding

## Broadband Study



### Local Technology Planning Team Organized

- 11 Industry sectors represented including schools, government and business



### Community Broadband Survey

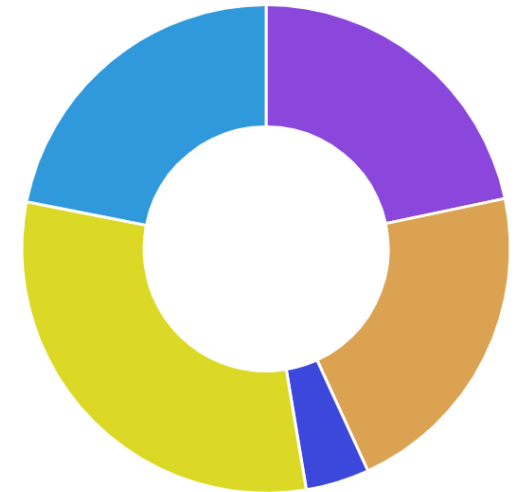
- Closed March 14
- Paper and electronic distribution



\$250,000 Broadband assessment and feasibility study with Florida Polytechnic

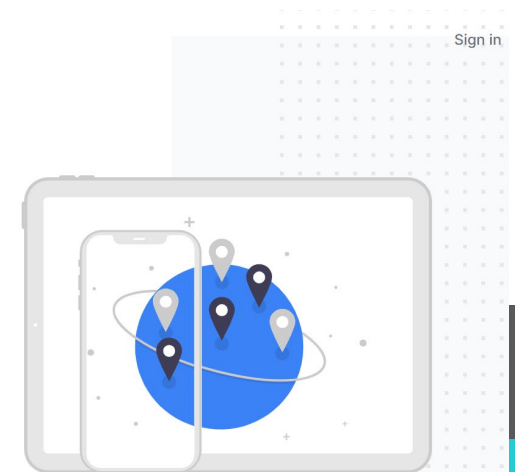
How satisfied are you with your current internet access?

Legend: Unsatisfied (Purple), Somewhat Unsatisfied (Orange), Not Sure (Blue), Somewhat Satisfied (Yellow), Satisfied (Light Blue)



## The future of broadband internet

Join us in our vision to expand broadband internet access and bridge the digital divide in communities throughout Polk County.





# Government's Response to Local Challenges

# Public Safety

## New Fire Stations



### Phase 1

- Kathleen Fire Rescue Station
- Frostproof Area Fire Rescue Station
- Winston Creek Fire Rescue Station
- Loughman Fire Rescue Station

### Phase 2

- Moore Road Fire Rescue Station
- Masterpiece Fire Rescue Station
- Watkins Road Fire Rescue Station
- Lakeland Hills EMS

### Phase 3

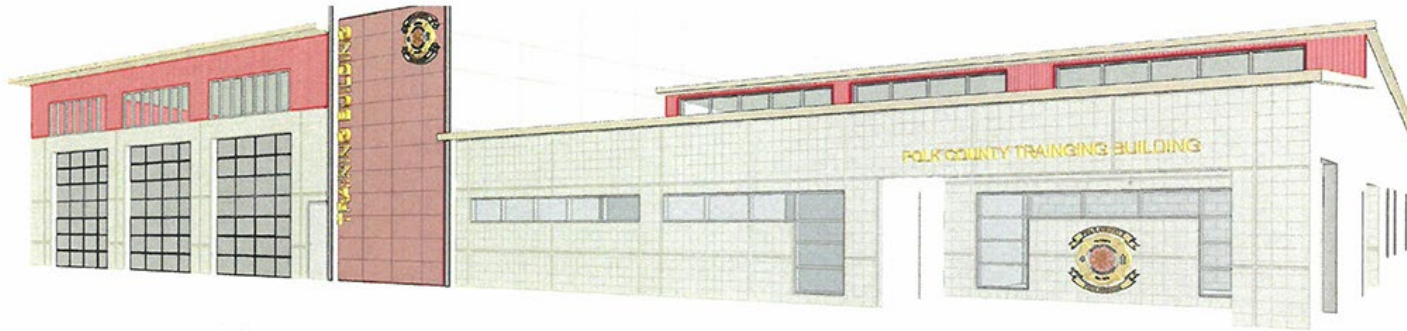
- Nalcrest Fire Rescue Station
- Caloosa Lake Fire Station
- Polk City Fire Rescue Station
- Highland City Fire Rescue Station
- Eaton Park Fire Rescue Station

### Phase 4

- Willow Oak Fire Station
- Eagle Lake Fire Rescue Station
- Bradley Fire Rescue Station
- Tenoroc Fire Rescue Station
- Bartow Fire Rescue Station

# Public Safety

## New Fire Rescue Training Center



3D Concept Model -  
Apparatus Training Building



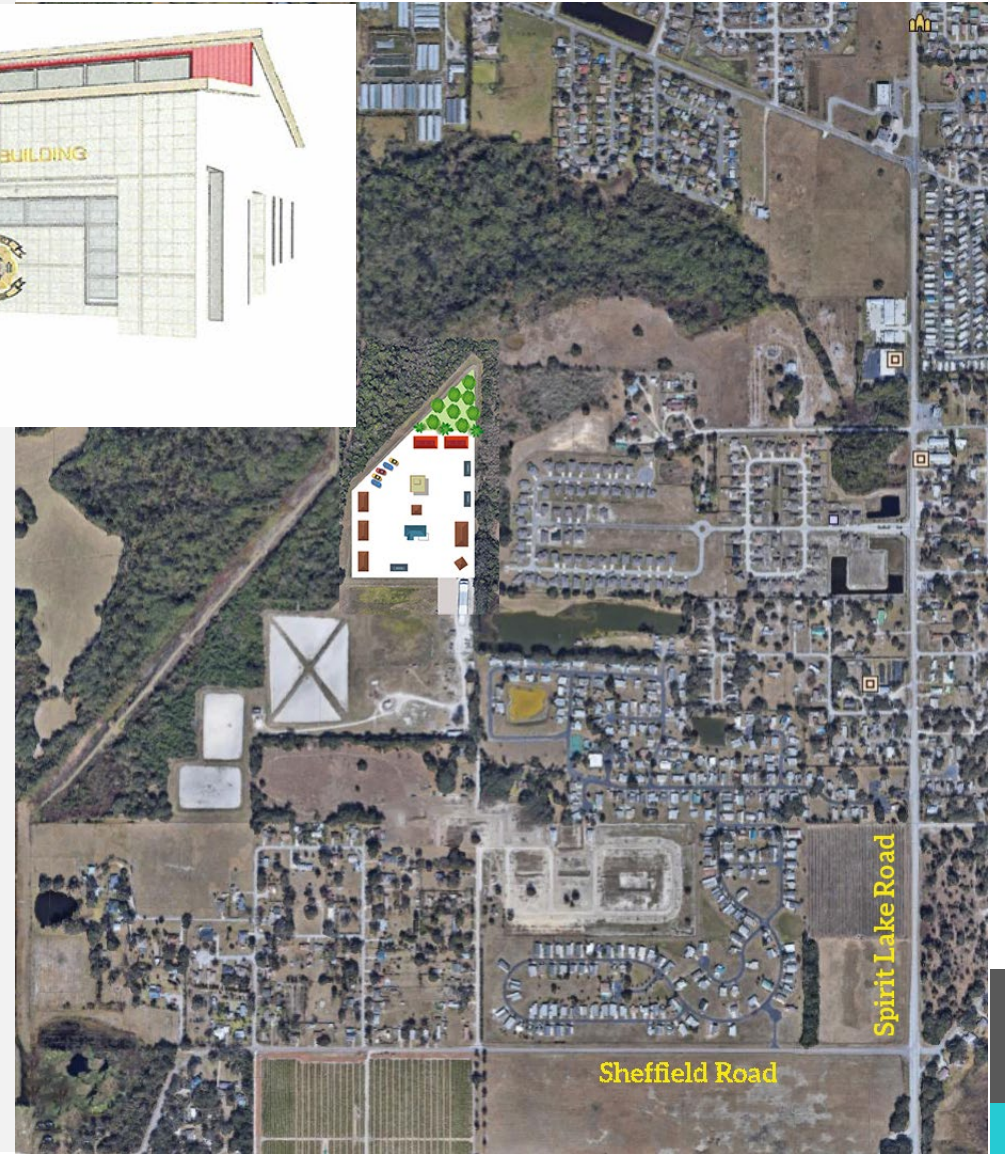
Third Busiest Fire Rescue  
Department in Florida



118,709 Calls for Service in 2021



Provide training in a challenging  
environment with corrections  
made in non-emergency  
situations





# Public Safety

## Sheriff's Office



Crime Rate decreased 6.4%  
between 2020 and 2021



Demands for Service  
increasing with population  
growth

- Need 125 new Deputy  
Sheriff positions over the  
next 5 years



Future need for  
additional jail space



New Processing Center opened in 2021

# Public Safety Sheriff's Office



## Future New Facilities in 2023

Burnham McCall Training Center

Poinciana Substation





## Central Polk Parkway

### Central Polk Parkway (Phase I & II)

- New, 9-mile tolled roadway
- Four-lane, divided, limited-access highway
- All Electronic Tolling (AET)
- Interchanges SR 60, 91 Mine Rd, US 17, SR 540 & SR 570 (Polk Parkway)

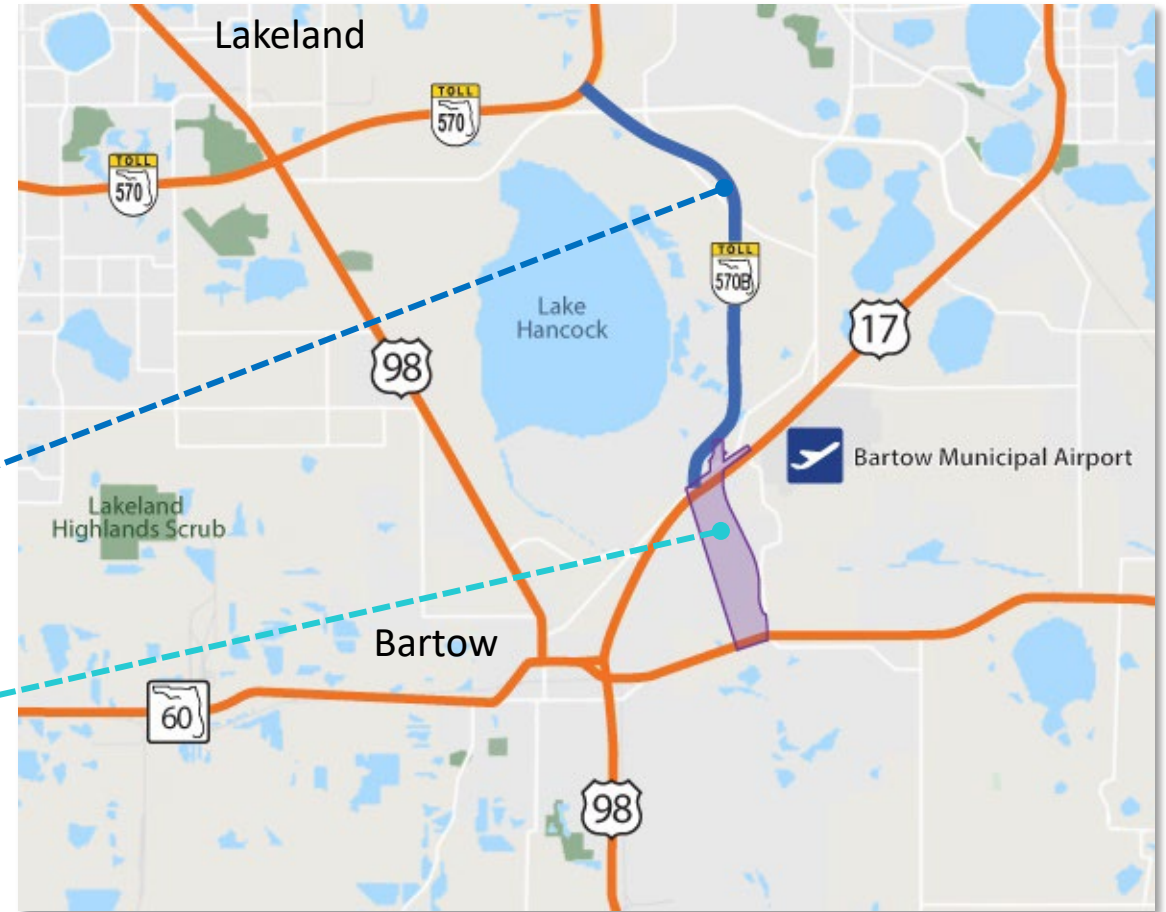
### Currently in PD&E and Design

#### Phase I (SR 570 – US 17)

- ROW \$41M FY 2021-23
- CST \$221M FY 2023-25

#### Phase II (US 17 – SR 60)

- ROW \$20.1M FY 2023-25
- CST \$155M FY 2025-27



# Regional Transportation Initiatives



## FDOT Planning Study

- Study Area – US 27 (SR 60 to US 192)
- Multi-modal transportation options/multiple corridors
- Study is complete. FDOT now focusing on Intersection analysis along US 27.
- Turnpike is evaluating modified Central Polk Parkway (CPP) alignment.

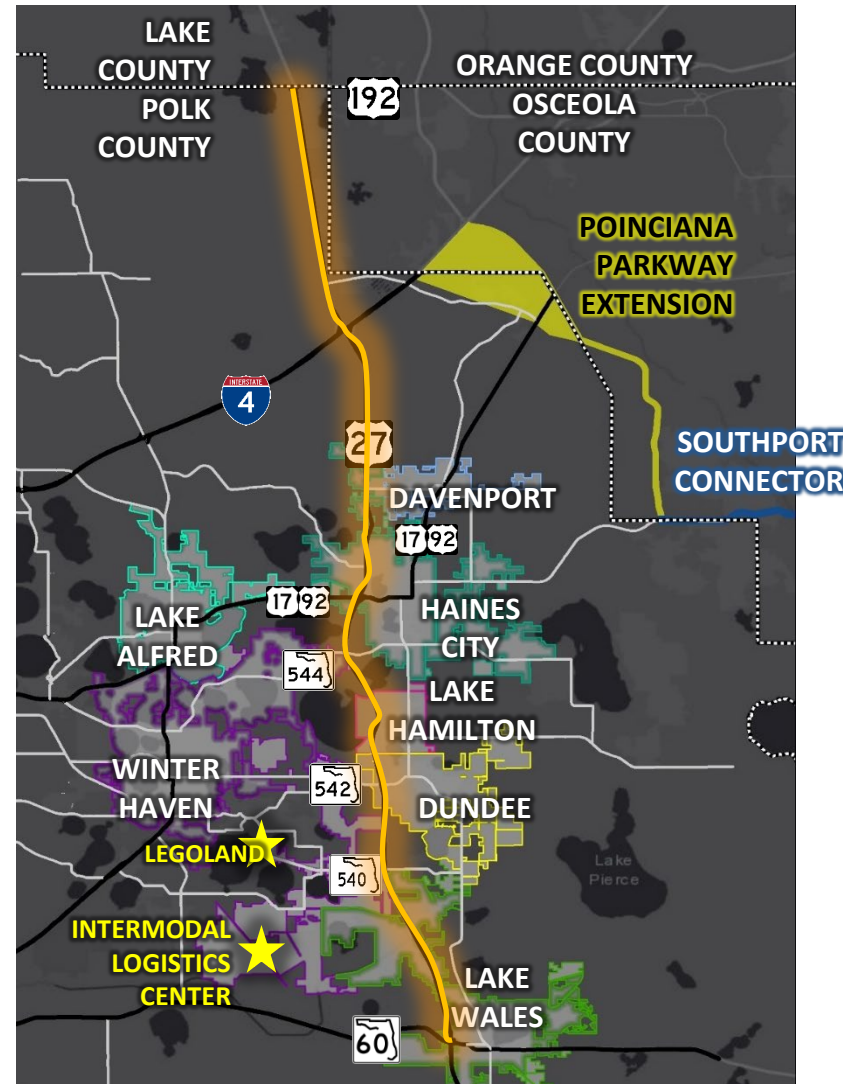
## New Corridor Connections

- Southport Connector (CFX)
- Poinciana Parkway (CFX)
- Other new corridors, e.g., CPP

## Widen/Improve Existing Corridors

- US 17/92, SR 544, CR 557\*, CR 547, CR 580\*, US 27@I-4 Interchange\*

\* Funding in County's CIP or FDOT Work Program



**CENTRAL  
FLORIDA  
EXPRESSWAY  
AUTHORITY**

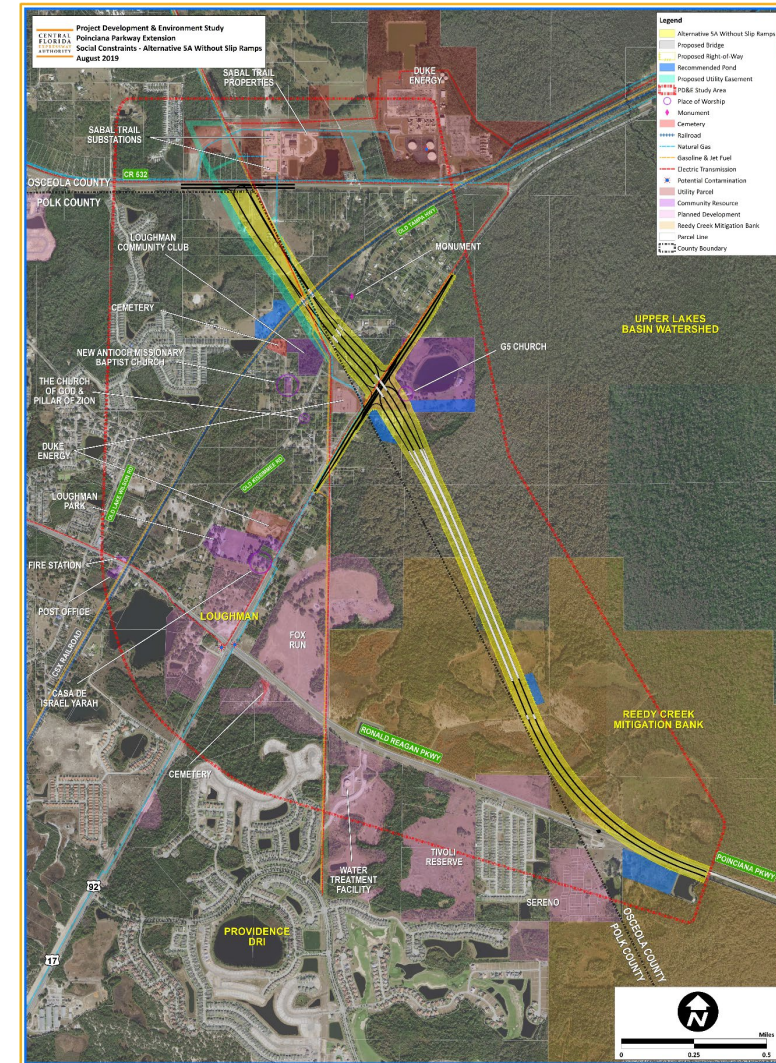
## Poinciana Parkway/ I-4 Connector

### US 17/92 to CR 532

- CFX Approved PD&E
- Design to be completed by early/mid 2022 followed by Construction
- Osceola County widening CR 532
- FDOT I-4 “Beyond the Ultimate” interchange improvements at Champions Gate/CR 532 – CST underway

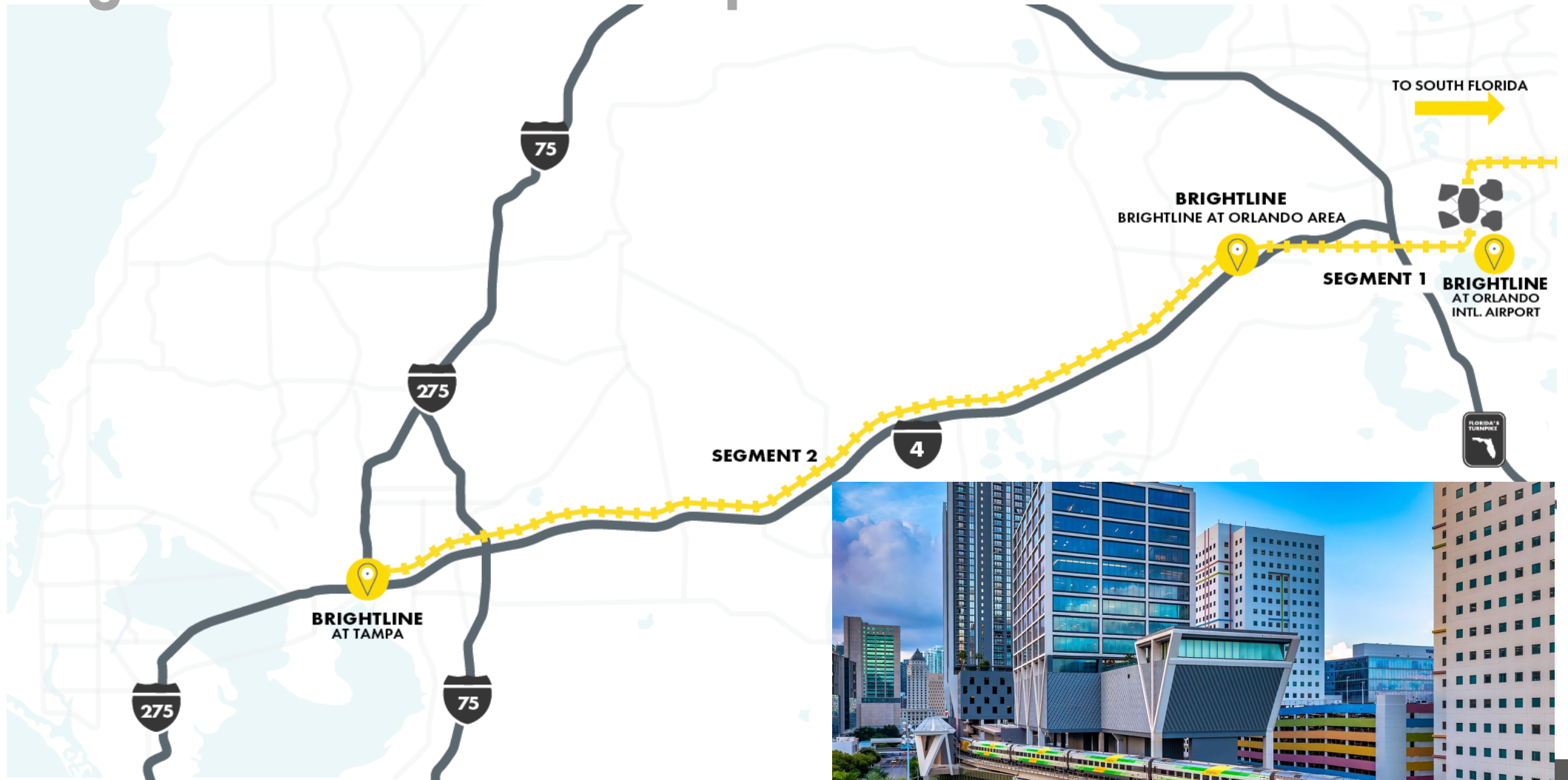
### Florida Turnpike Enterprise

- Evaluating feasibility of extending Poinciana Parkway to I-4 – study completed by summer 2023



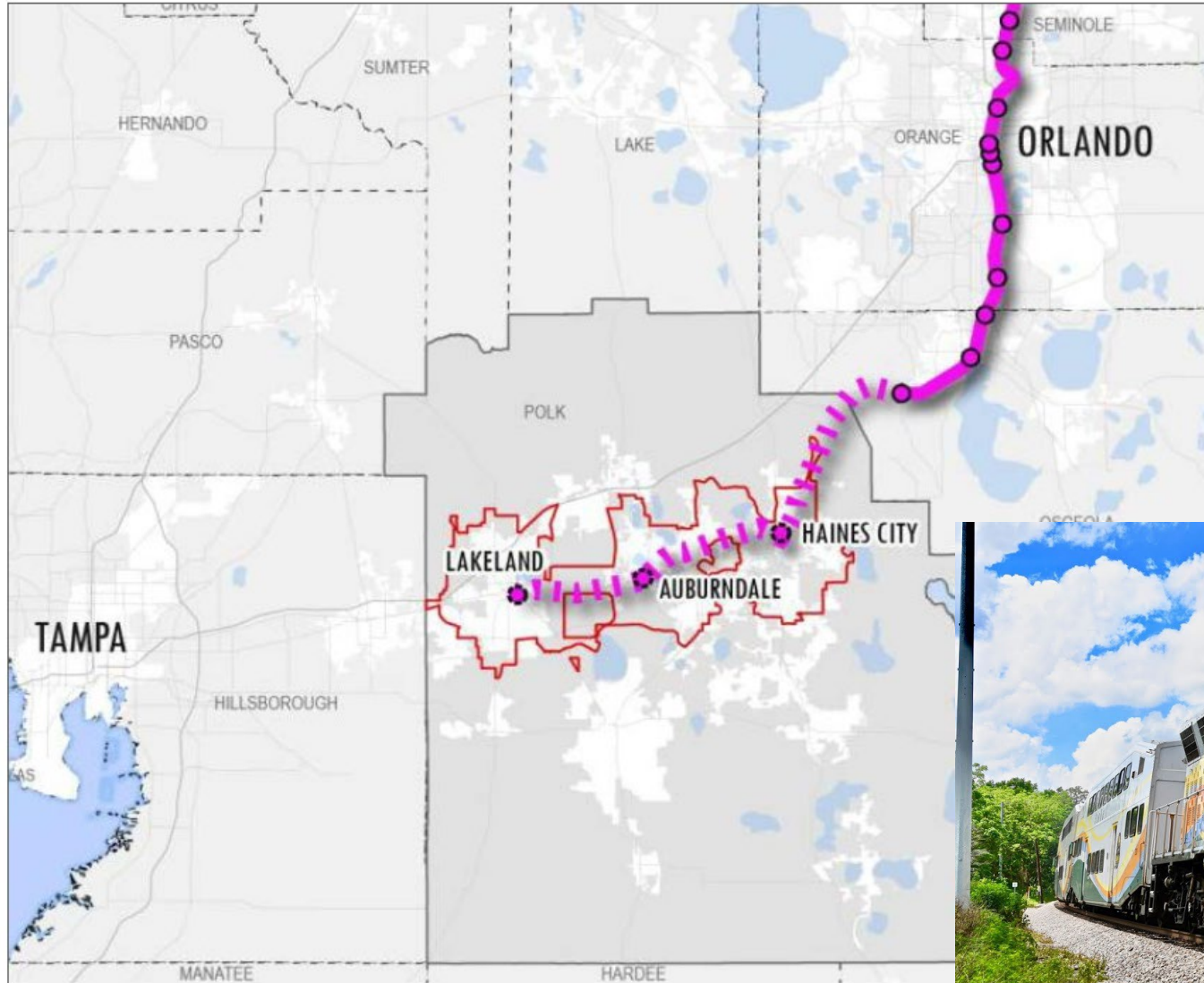
# Regional Transportation Initiatives

## Brightline Phase III – Tampa Extension



# Regional Transportation Initiatives

## Potential SunRail Extension into Polk County



# Funded County Transportation Projects

Project	Miles	Millions
Thompson Nursery Road (US 17 to West Ruby Lake Drive)	5.6	\$ 100.6
Lake Wilson Road (CR 54 to Osceola/Polk Line Road)	1.1	\$ 39.1
West Pipkin Road (Medulla to S. Florida Ave.)	4.2	\$ 60.7
CR 557 (W. Alfred Street to I-4 Interchange)	6	\$ 89.1
Marigold Avenue (Palmetto Street to Cypress Parkway)	2.2	\$ 32.1
North Ridge Trail (Deen Still to Sand Mine Road)	2	\$ 9.5

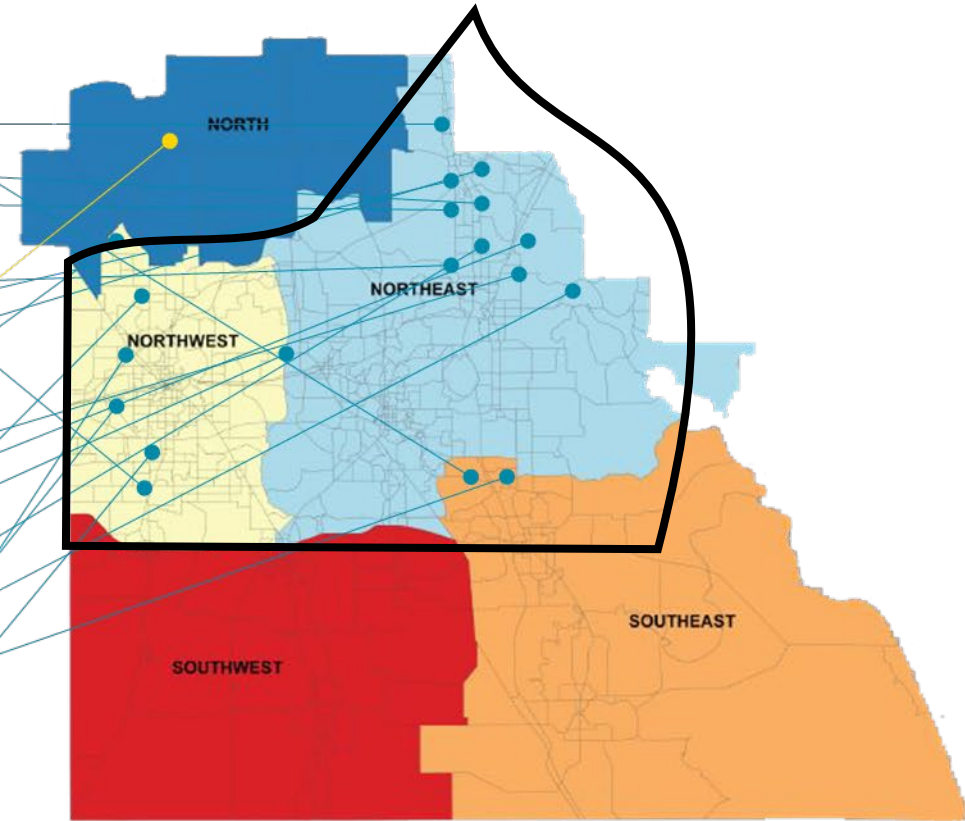


# Unfunded Capacity Projects

 Funding Needed = \$1,179,740,000

millions

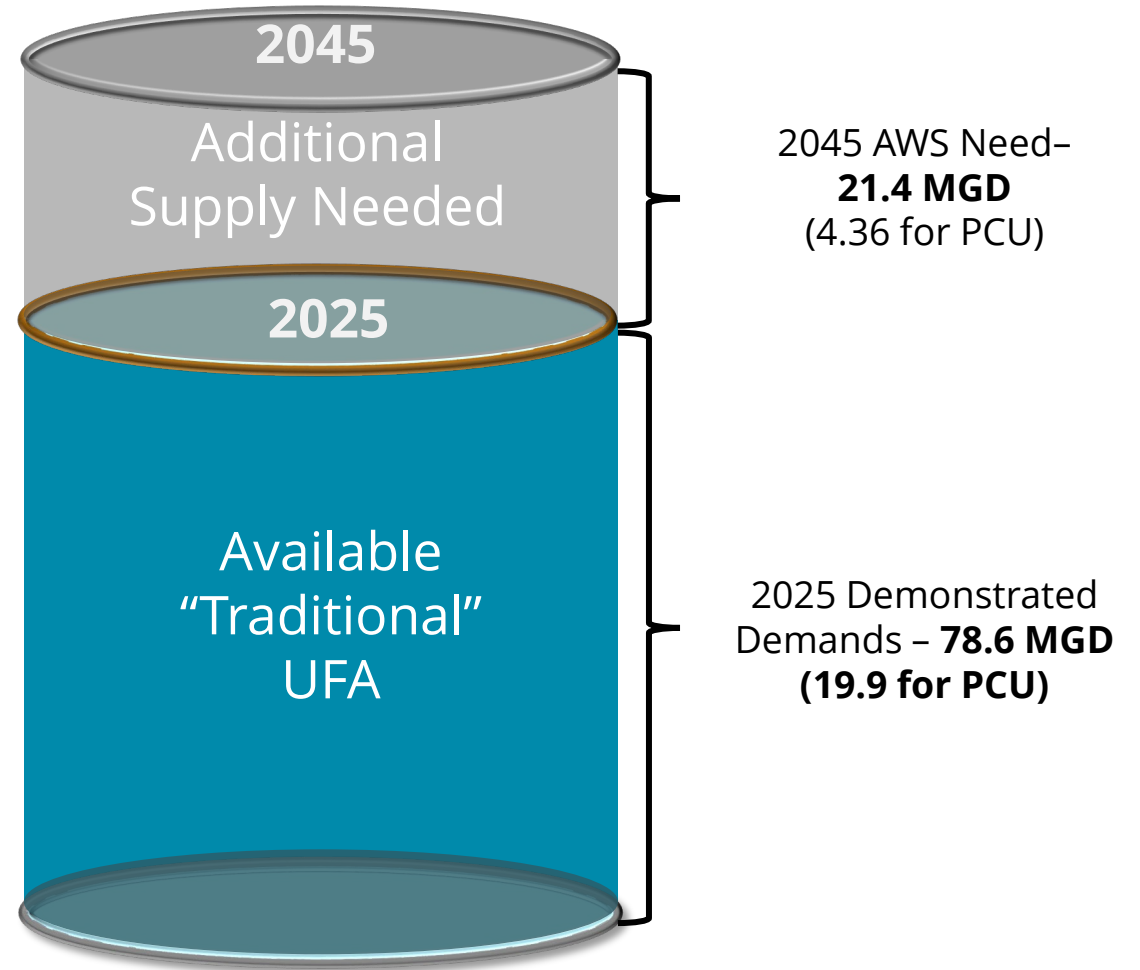
PRIORITY	ROAD	TOTAL
1	Thompson Nursery Road Phase 2 (W. Lake Ruby to US27)	\$ 54.00
2	North Ridge Trail PH I	\$ 15.80
3	Holly Hill Extension (Patterson Rd to Florida Development Road)	\$ 17.00
4	FDC Grove Road Ext. (Patterson Rd US27 to Ernie Caldwell Blvd)	\$ 80.00
5	Ewell Road (Lunn Rd to SR 37)	\$ 40.00
6	Sanders Road Ext (CR 17 to US 27)	\$ 12.00
7	North Ridge Trail I4 Extension (FDC Grove Road to Deen Still Road)	\$ 102.94
8	Grandview Parkway Extension /Flyover	\$ 71.00
9	Deen Still Road Realignment/Extension West (US98 to US27)	\$ 170.00
10	Kathleen Road Extension ( Duff Road to US 98)	\$ 100.00
11	Powerline Road Extension (SR17 Scenic HWY to US17/92)	\$ 171.00
12	CR 547 (Ernie Caldwell Blvd to Ronald Reagan Pkwy CR 54)	\$ 68.00
13	CR 546 (Old Dixie Hwy to SR 559/Berkley Rd)	\$ 20.00
14	Marcum Rd Extension (US 98 to Green Rd)	\$ 11.50
15	CR 547 West (US 27 TO US 17/92)	\$ 56.00
16	CR 580 (Powerline Rd to W Solivita Blvd)	\$ 78.50
17	CR 17A (Chalet Suzanne Rd) (US 27 to SR 17)	\$ 40.00
18	CR 542A (Galloway Road) From US 92 to 10th Street W	\$ 34.00
19	CR 542A (Galloway Road) From 10th Street W to CR 35A	\$ 32.00
20	West Pipkin Road 5 Laning (Harden Blvd to SR 37)	\$ 6.00



# Future Water Supply

Utilities across Polk County will need an additional **21.4 million gallons per day** in water supplies to meet 2045 demands

**4.36 MGD for Polk County Utilities**



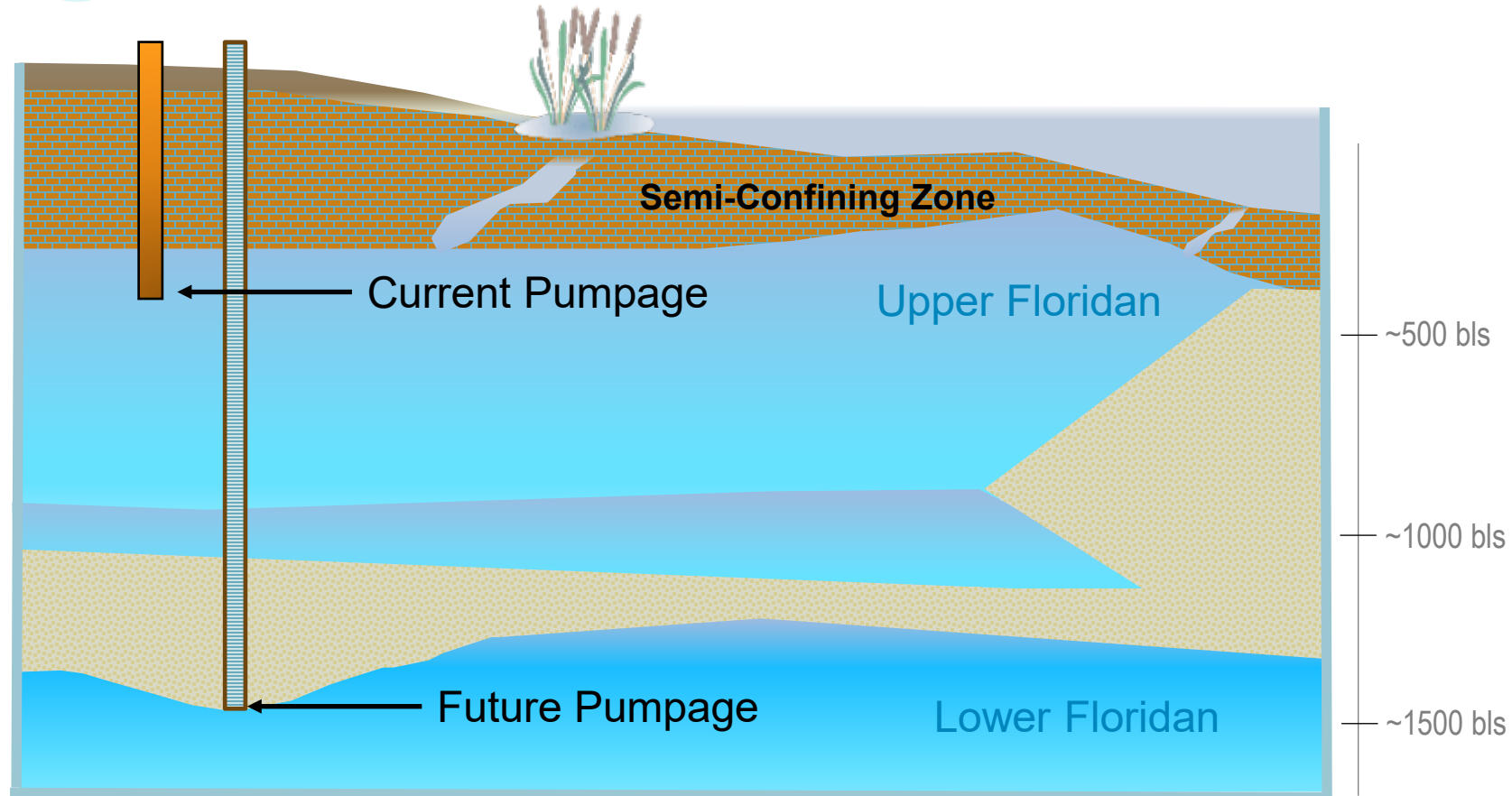
# Future Water Supply



Regional agency is leveraging nearly \$300 million in low-interest loans



State has appropriated \$10s of millions to Polk for projects



# Behavioral Health

Behavioral Health, including mental health and substance abuse, was identified as the **number one priority health issue** for Polk County as a result of the 2019 Polk Community Prioritization Exercise.



County serves as a major stakeholder and driver in the planning of the Behavioral Health Strategic Plan and implementation



\$7.5 million budgeted in FY 2021/2022



Working to secure funding for carrying out core strategies, including grants and a \$2.4 million federal appropriation request

# Behavioral Health Opioid Settlement



County and municipalities to receive about \$20 million over a 17-18-year payout period



Spent for abatement of the Opioids epidemic

- Strategies, programs, and services to expand available treatment opportunities for individuals and families impacted



Received notice first opioid settlement payment disbursement

- April 2022
- Estimated amount is \$132,139
- Establishing the framework to receive payments



## Legislative Priorities

# Legislative Priorities

---

## Policies



Oppose Unfunded Mandates



Water Cooperative Initiatives



Transportation Funding



Behavioral Health Funding



Affordable Housing Funding

# Local Issues on 2022 Ballot

## November 1



Charter Amendments to:

- Increase the time between Charter Review Commissions from 8 to 12 years
- Eliminate Polk County's Efficiency Commission



Ask voters to approve .2 mill MSTU to acquire, preserve, protect, manage and restore endangered and environmentally sensitive lands, water resources and important wildlife habitats.



---

# Thank you.



# Polk County Public Schools Presentation

---

SARA BETH WYATT, DISTRICT 4, SCHOOL BOARD CHAIR

FRED HEID, SUPERINTENDENT

STUDENTS FIRST

# School District Overview

The district's total enrollment is more than 110,000 students (pre-K through 12<sup>th</sup> grade).

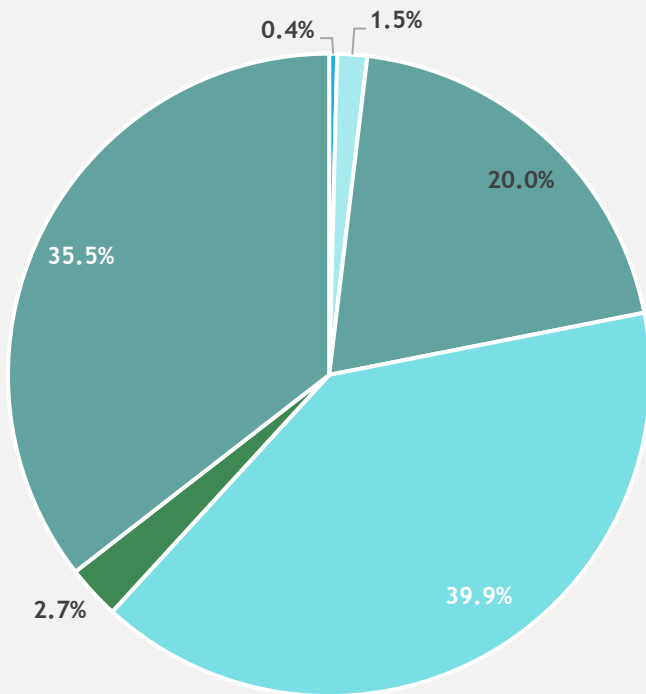
Our transportation fleet includes more than 500 school buses for our daily routes. We typically have 48,000 to 50,000 students scheduled to ride our buses. Our buses travel approximately 42,000 miles each day.

PCPS employs approximately 14,000 total staff members (more than 7,000 of whom are teachers).

Our district operates more than 150 school sites.

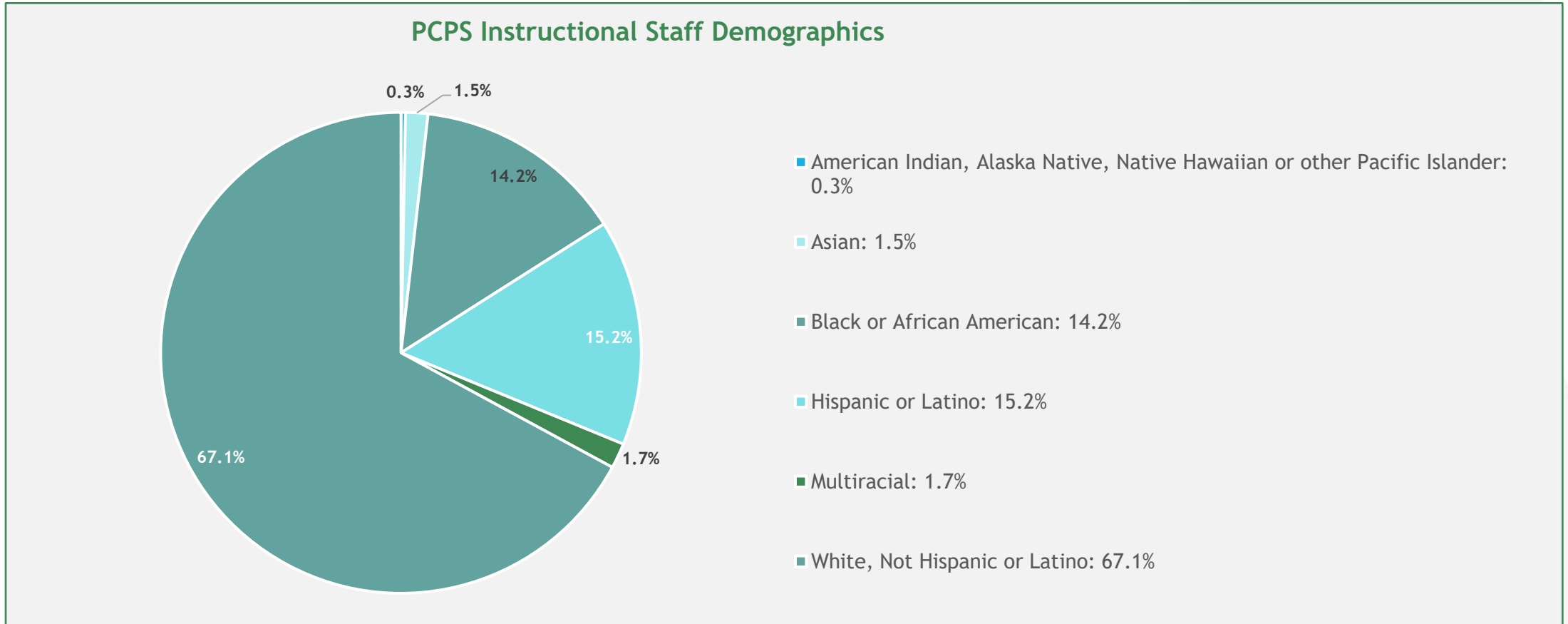
# Student Demographics

PCPS Student Demographics

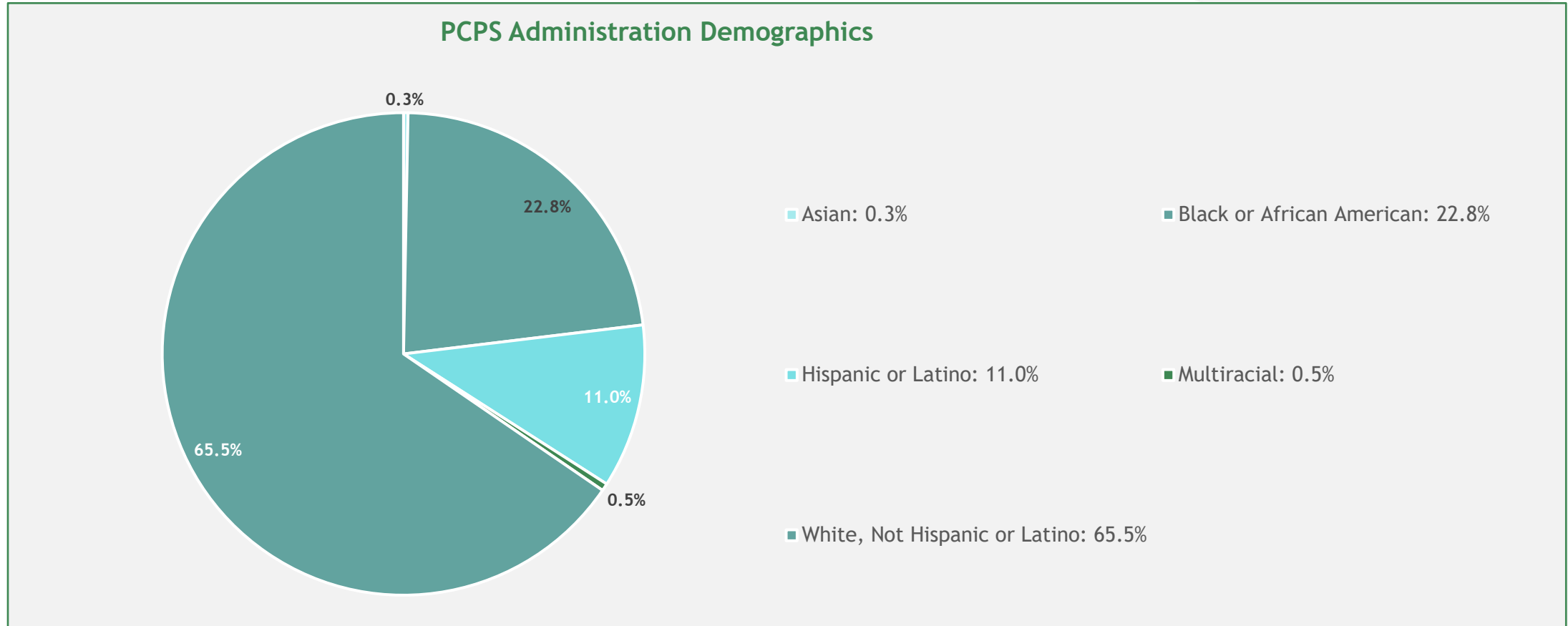


- American Indian, Alaska Native, Native Hawaiian or other Pacific Islander: 0.4%
- Asian: 1.5%
- Black or African American: 20%
- Hispanic or Latino: 39.9%
- Multiracial: 2.7%
- White, Not Hispanic or Latino: 35.5%

# Staff Demographics



# Administration Demographics



# Strategic Planning Underway

The district's previous, five-year strategic plan expired in 2021.

PCPS is currently developing a new strategic plan.

The community was recently invited to participate in the Portrait of a Graduate survey.

Participants identified the top characteristics/attributes that every student should possess upon graduation.

Survey results will help create a shared vision for our community's youth and how to best prepare students for success beyond the classroom in existing and emerging career fields.

# Strategic Plan Goal Areas

Goal 1: Student Outcomes

Goal 2: Develop Great Teachers and Leaders

Goal 3: Engage Family & Community

Goal 4: Equitable & Efficient Use of Resources

Goal 5: Develop the Whole Child



# Notable Achievements

# District Grade and Graduation Rates

- In 2018, PCPS became a “B” district after having previously been a C-rated district for seven straight years. The district maintained this B grade in 2019. \*\*

\*\*Note: The district has not received an official district grade since 2019 due to the pandemic’s disruption to the statewide assessment cycle.\*\*

- Over the last six years, the district’s graduation rate rose by 14.7 percentage points, jumping to 86.5% in 2020 — a new record high — even as seniors faced unprecedented challenges due to the pandemic.
- Polk’s 2020 graduation rate for black students rose to 86.7% and 85.7% for Hispanic/Latino students, compared to each group’s rate of 78.7% the year prior.
- The Florida Department of Education recently released 2021 graduation data. The district’s 2021 graduation rate declined slightly (1.2% percentage points) from 86.5% to 85.3%. However, this minimal drop is promising in light of the significant obstacles associated with the ongoing pandemic.

# District Finances

- The district operates with an annual budget of \$2.25 billion and maintains a credit rating of Aa2 as calculated by Moody's Investor Service, meaning our obligations are judged to be of high quality and subject to very low credit risk. This rating reflects the district's diverse and growing tax base, which drives increasing enrollment, and its adequate finances and very low leverage metrics.
- Over the years, the district has taken advantage of refinancing opportunities, which allow it to redirect dollars saved on interest into schools' equipment, facilities, and maintenance. In addition, the district ended the fiscal year 2020-21 with an 8.1% general fund balance, exceeding the board policy of 5%.
- The district has finalized all four of our contracts with the respective collective bargaining units.

# Career Academies

- Career academies are personalized learning communities each centered on a career theme. They feature college-prep curriculums and offer a path to industry certifications while helping students to discover engaging opportunities in the working world.
- PCPS has the second-highest number of National Career Academy Coalition (NCAC) accredited academies in the nation! NCAC (*National Career Academy Coalition*) is an organization based out of Nashville, Tennessee that supports Career Academies and conducts Career Academy Reviews to determine if an academy is a high functioning quality Career Academy.
- PCPS has nearly 30 certified or model career academies and has become a destination for school districts around the United States interested in learning about and applying the academy model.

# Fine and Performing Arts

The district is also committed to providing students with opportunities to explore the arts. Our arts education programs include music, theatre, dance and visual arts.

Over the last several years, six schools have earned the Florida Arts Model Schools designation from the Florida Department of Education and the Florida Alliance for Arts Education (FAAE):

- Chain of Lakes Elementary
- Davenport School of the Arts
- Haines City High
- McLaughlin Middle School and Fine Arts Academy
- Rochelle School of the Arts
- Spessard L. Holland Elementary

# Promoting Academic Rigor

In recent years, students have shown a growing interest in **dual enrollment** classes through post-secondary institutions:

- Students can sample what college-level classes are like.
- Students can earn college credit without having to pay tuition.
- Graduates from the Class of 2020 took approximately 7,500 dual enrollment courses, representing a savings of about \$2.6 million to their families.

Students can also take classes through our **International Baccalaureate** programs at:

- Two high schools (Bartow High and Haines City High)
- Four middle schools (Dundee Ridge Middle Academy, Jewett Middle, Lawton Chiles Middle Academy, and Union Academy)
- Three elementary schools (Brigham Academy, Dundee Elementary Academy, and Lincoln Avenue Academy)

In addition, students can pursue rigorous academic studies offered through a division of the **University of Cambridge**.

- Tenoroc High and Winter Haven High offer the Cambridge program at the high school level.
- In 2018, Denison Middle School became the first middle school in Polk County to offer a curriculum affiliated with the University of Cambridge.

# Building 21<sup>st</sup> Century Skills and Addressing the Digital Divide

- Many households in our community do not have internet-accessible devices, placing them at a great disadvantage in the digital age.
- Only 70% of households were identified as having a broadband internet subscription, and 88% were identified as having a computer, according to U.S. Census data.
- PCPS received a \$28 million grant to make 1:1 access a reality beginning in 2022-23. Every student in grades K-12 will have access to a device.
- The grant provides funding for both devices (e.g., iPads and laptops) and connectivity (e.g., hot spot, mobile Wi-Fi access, or hardwired access).
- Three additional early release days are being included in the 22-23 school calendar bringing the total number to 10 to ensure staff training opportunities will ensure effective implementation.

# Challenges and Opportunities



# Challenges/Opportunities

Human Capital

Facilities

Growth/Shifting Demographics

Culture/Climate

Equity

Lingering Effects of COVID-19

1:1 Rollout and Shifting Instructional Practices

# Human Capital

## CHALLENGE

- PCPS continues to be challenged by staffing across all areas (e.g., instructional, critical, trades, and transportation)
- Unaddressed, vacancies will have a significant impact on PCPS operations

## OPPORTUNITY

- The district is using a combination of strategies to help address these including:
  - Competitive salaries
  - Grow your own programs
  - International recruitment
  - Creative scheduling to maximize existing staff

# Facilities

## CHALLENGES

- Facilities will continue to be a focus as we work to address growth and replace existing facilities and infrastructure.
- Growth will require 25-30 new school sites
- Aging infrastructure and equity

## OPPORTUNITIES

- PCPS is fortunate to have the confidence of its stakeholders who renewed the half-cent sales tax referendum for facilities.
  - 9 new schools
  - 11 modernizations
  - 45 classroom additions
  - 50 playgrounds

# Growth/Shifting Demographics

## CHALLENGES

- Polk is the fastest-growing county in Florida and the seventh-fastest-growing in the nation.
- The district is projected to grow by an additional 50,000 students over the next 12-15 years.
- The district is now comprised of 60% minority student enrollment.
- Polk will struggle with its newfound growth and its ability to retain its sense of history.

## OPPORTUNITIES

- The district will use a tiered approach to address the need for additional student stations through:
  - Rezoning
  - Additions
  - Construction of new facilities.
- The district is working to be more inclusive of our community interests and needs.

# Culture/Climate

## CHALLENGES

- The existing culture and climate is positive but shows signs of concern as follows:
  - Lagging vacancies
  - High absenteeism (more than \$12 million lost each year)
  - COVID fatigue
  - Lack of professional advancement opportunities within the classroom

## OPPORTUNITIES

- We have established Collaborative Councils to bring teacher/employee voice to discussions about initiatives and plans.
- We will seek to address absenteeism through targeted intervention.
- Mental health and other wraparound services are being expanded for staff.
- New certifications/endorsements are being created to encourage personal growth and retain instructional staff within the classroom.

# Equity

## CHALLENGES

- Students do not have equal access to programs or courses.
- Physical location of programs serves as a barrier to participation and retention
- Staffing lacks equity and is clearly disproportional, including low minority candidate participation and placement in administrative roles.

## OPPORTUNITIES

- Program expansion to create regional options
- Reconfiguring training and hiring practices to ensure we are hiring quality candidates and using feedback to develop those not selected.

# Lingering Effects of COVID-19

## CHALLENGES

- Academic loss (real and/or perceived)
- Mental and physical health issues
- Escalating student discipline
- Need for additional wrap-around services

## OPPORTUNITIES

- District progress monitoring data does not suggest significant learning loss.
- The district has contracted with Hazel Health to provide both physical and mental health supports for students.
- Student discipline creates an opportunity to revisit district procedures and training.
- The district will prioritize wraparound services in the next strategic plan and budgeting process.

# 1:1 Rollout and Shifting Instructional Practices

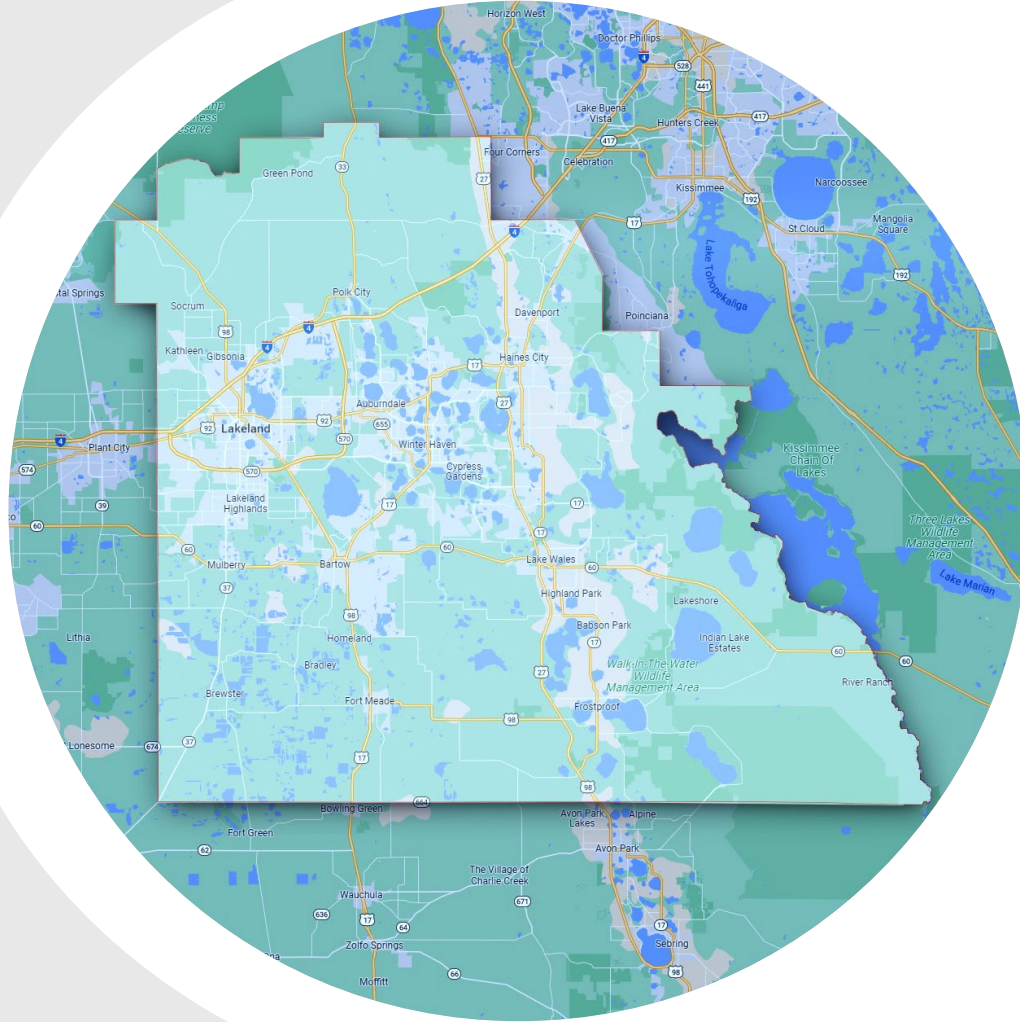
## CHALLENGES

- Device deployment
- Device tracking and management
- Shifting instructional practices
- Instructional resource alignment
- Staff training - Being device rich is not the same as being instructionally proficient.
- Connectivity

## OPPORTUNITIES

- The district has been working to ensure adequate device management and supports.
- The district calendar will provide additional training days for staff.
- 1:1 will better support independent learning, competency-based instruction, differentiation, and instructional staff shifting to the role as facilitator.





# Florida HEALTH

Polk County

## STATE OF THE COUNTY HEALTH STATUS OF POLK

JOY JACKSON, MD, DIRECTOR - FLORIDA  
DEPARTMENT OF HEALTH IN POLK COUNTY

# OVERVIEW

- Population changes
- Health indicators – children, young adults, adults, older adults
- Mental health and substance abuse
- Health outcomes and differences among populations
- Local initiatives
- Looking to the future

# POPULATION CHANGES

- Age demographics
  - Births – 7,984 in 2020
  - The age group 20 – 44 makes up the largest percentage of Polk’s population at 31%
  - Age 65+ makes up about 20% of the population and is the fastest growing population segment – increasing 24% over the past 10 years
- Racial and ethnicity trends

	White	Black	Hispanic
2010	80.6%	15.2%	18%
2020	78.8% (-1.8%)	16.2% (+1.0%)	24.6% (+6.6%)

# HEALTH INDICATORS – INFANTS AND YOUNG CHILDREN

- **Infant mortality** is the death of a live-born infant during the first year of life
  - 59 infant deaths in 2020. Rate of 7.4 per 1000 live births (FL 5.8)

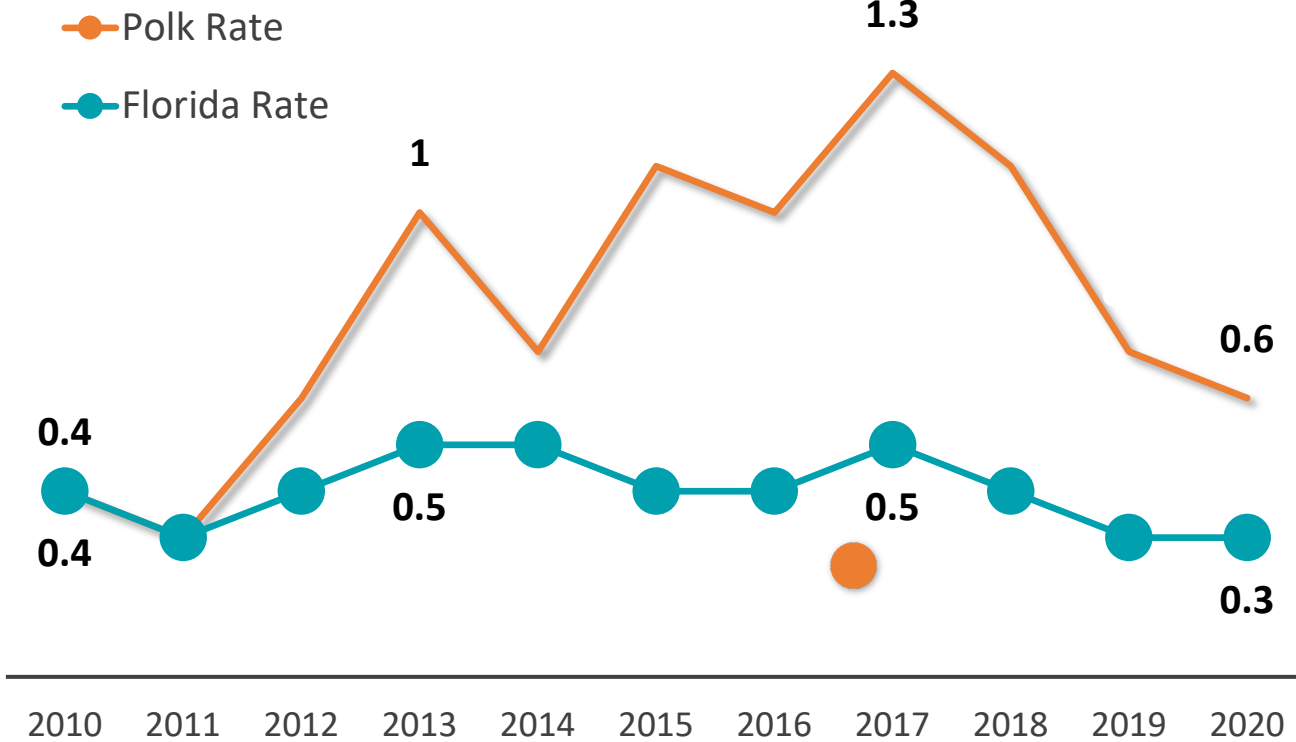
## Infant death rate per 1000 live births

<i>White</i>	<i>Black</i>	<i>Hispanic</i>
6	12.7	6.5

- Leading causes: perinatal conditions, congenital malformations, unintentional injury
- **Infants born to mothers with adequate prenatal care 64% (FL 67%)**
  - Maternal obesity, hypertension, substance use, and other chronic conditions may go undetected and inadequately treated

# SLEEP-RELATED DEATHS ARE A LEADING CAUSE OF PREVENTABLE INFANT DEATHS IN POLK

Infant Deaths from Unintentional Suffocation and Strangulation



Source: FLHealthCHARTS

## Safe sleep practices include

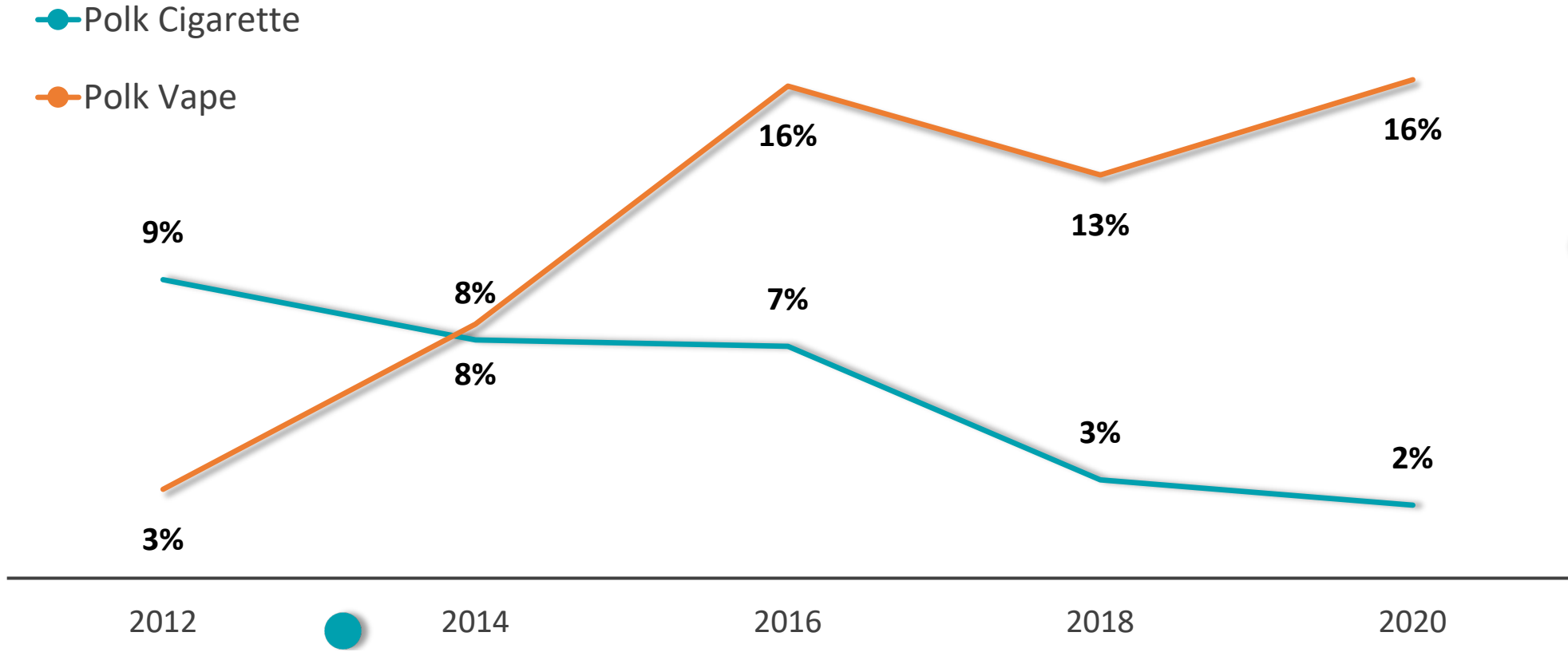
- Placing the baby on his or her back at all sleep times – including naps and at night.
- Using a firm sleep surface, such as a safety-approved mattress and crib.
- Keeping soft objects and loose bedding out of the baby's sleep area.
- Sharing a room with baby, but not the same bed.

Source: CDC.gov

# HEALTH INDICATORS – OLDER CHILDREN AND ADOLESCENTS

- **Children under 18 in single-parent homes 27.6% (FL 28.4%)**
- **Families with children under age 18 living below 100% poverty 14.4% (FL 15.2%)**
- **Illnesses**
  - Asthma – 4th quarter (worst) for hospitalizations
  - Middle school students who are obese 16.1% (FL 13.1%)
  - High school students who are obese 17% (15.4%)
  - Non-fatal hospitalizations for self-harm, ages 12-18
    - Polk 53 count in 2020, rate of 84.9 (FL 70.8)

# YOUTH E-CIGARETTES & VAPING



Percent of students who are current cigarette smokers (smoked/vaped in the past 30 days), All Middle and High School Students

# HEALTH INDICATORS – ADULTS

## Chronic diseases

- Heart disease – nearly equal prevalence in black, white, Hispanic
- Overweight or obese – 71.3% (FL 64.6%)
- Diabetes

	Overall	Whites	Blacks
• Adults who have ever been told they have diabetes	15.4%	11.8%	31.4%

	Polk	FL
• Adults with health insurance	87%	87.3%
• Adults who are current smokers	17.8%	14.8
• Adults who are current e-cig users	7%	7.5%



# HEALTH INDICATORS – OLDER ADULTS

---

## *Aging in Florida Profile in FL CHARTS*

---

Individuals 65+ living alone **22.8%** (FL 24.4%)

Individuals 65+ living below 100% poverty **10.3%** (FL 10.5%)

Individuals 65+ employed **12.9%** (FL 15.1%)

---

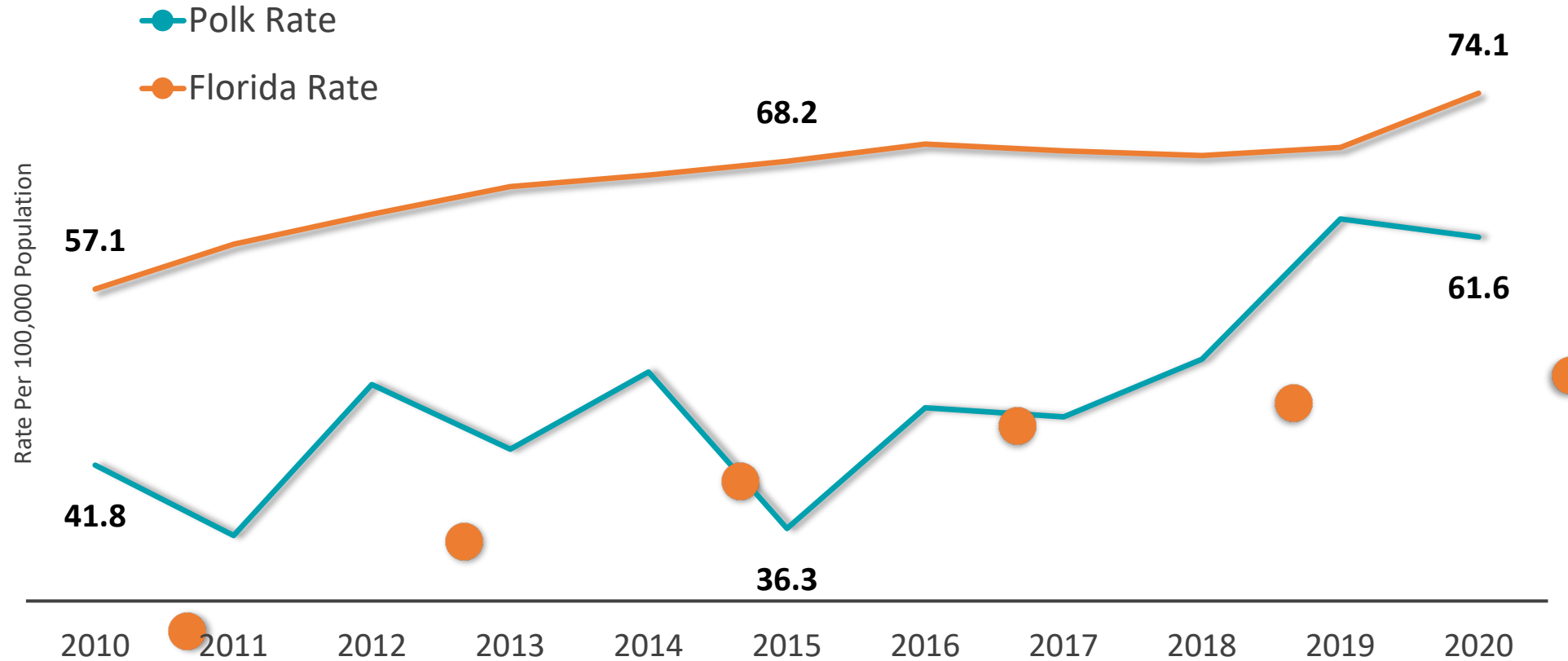
Age 65+ reporting good to excellent health **72.5%** (FL 72.6%)

Age 65+ who report limited activities due to physical, mental or emotional problems **25.9%** (FL 27.1%)

Age 65+ with probable Alzheimer's **12.2%** (FL 12.7%)

---

# TOTAL DEATHS FROM UNINTENTIONAL FALLS AGE 65-105



# LIFE EXPECTANCY IN POLK

Overall average life expectancy is 77.4 years in Polk (FL 79.4)

## Life Expectancy by Race/Ethnicity

White	77.6
Black	75.0
Hispanic	80.0
non-Hispanic	76.8

Sources: UMass Donahue Institute and the Florida Legislature Office of Economic and Demographic Research. (all accessed via FL Health CHARTS)

2020 Leading causes of death in Polk - 8,590 deaths

- **Heart Disease** - 1687
- **Cancer** - 1524
- **COVID-19** - 717
- **Stroke** - 605
- **COPD** - 535

Source: FDOH Bureau of Vital Statistics

# FATAL INJURIES

---

## Leading Causes of Fatal Injury in Polk, 2020

---

Under age 1	Suffocation
Ages 1 – 4	Drowning and fire
Ages 5 – 24	Motor vehicle accidents
Ages 25 – 64	Drug poisoning
Ages 65+	Falls

---

# BEHAVIORAL HEALTH PRIORITY

- Behavioral Health was identified as the top health concern for Polk County residents and stakeholders during the 2020 community health assessment.
- It was recognized that overall health is defined by both physical and mental well-being and that quality mental health care is vital for a healthy community.
- As a result, the Polk Vision Behavioral Health Team was created.
- In 2020 a comprehensive countywide assessment of the behavioral health system in Polk County was conducted involving local mental health leaders and providers, other healthcare partners, law enforcement, social services, county government, the CHD, and Polk Vision.
- In June 2021, the Behavioral Health Strategic Plan was published.

# BEHAVIORAL HEALTH, CONTINUED

- A tactical plan has been developed to address gaps in behavioral health access and improve overall behavioral health indicators

## Some top needs identified:

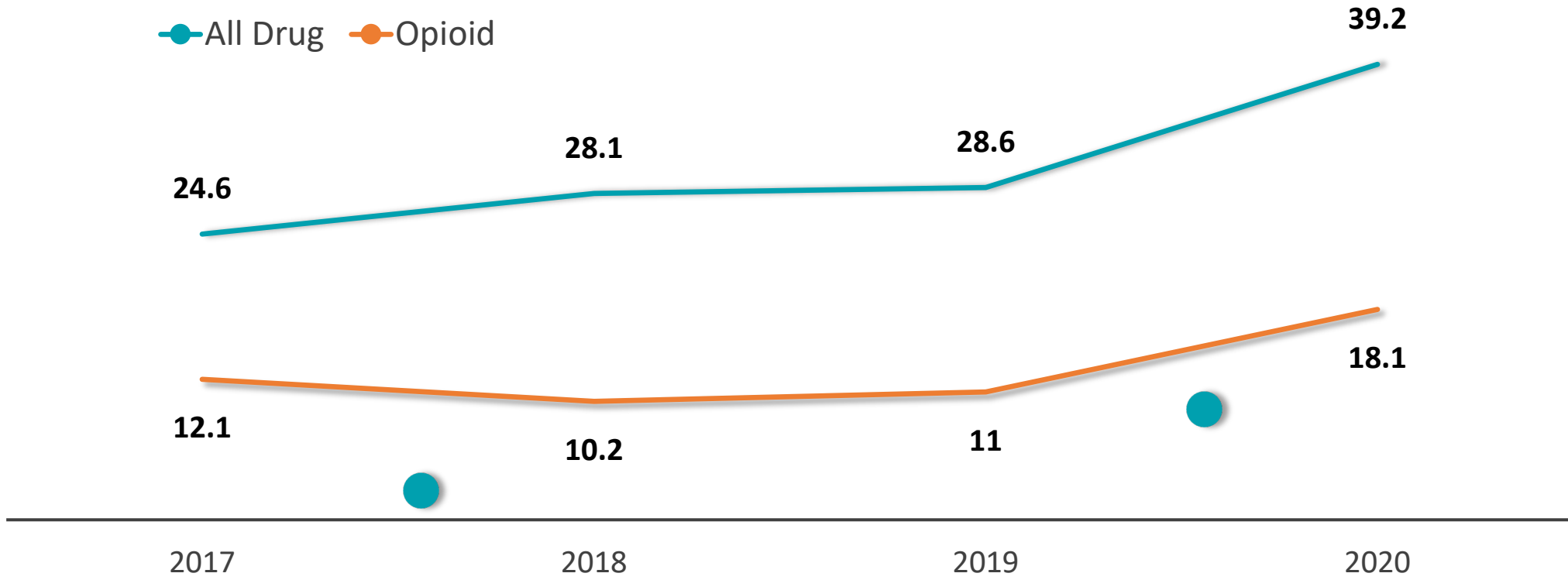
- Improved community awareness of available services
- Better collaboration among agencies
- Increased capacity of care coordinators, navigators, and caseworkers
- Transitional care services for people being released from jail
- More mobile crisis response

- Polk is a mental health provider shortage area

# 2020 HOSPITALIZATIONS FOR MENTAL AND BEHAVIORAL HEALTH DISORDERS, POLK COUNTY

Indicator	Drug and Alcohol-Induced Mental Disorders		Mood and Depressive Disorders		Schizophrenic Disorders		Eating Disorders		Hospitalizations Attributable to Mental Disorders	
	Count	Rate	Count	Rate	Count	Rate	Count	Rate	Count	Rate
Under age 18	10	6.45	570	367.51	18	11.61	15	9.67	744	479.69
18-21	52	151.87	226	660.04	70	204.44	14	40.89	457	1334.68
22-24	78	310.33	151	600.77	103	409.79	6	23.87	395	1571.54
25-44	729	408.82	809	453.68	695	389.75	25	14.02	2495	1399.17
45-64	539	317.38	699	411.6	412	242.6	12	7.07	1840	1083.46
65-74	110	136.6	198	245.87	88	109.28	<5		484	601.03
75 or older	23	35.91	86	134.29	42	65.58	<5		349	544.95
<b>Total</b>	<b>1542</b>	<b>218.05</b>	<b>2740</b>	<b>387.45</b>	<b>1428</b>	<b>201.93</b>	<b>76</b>	<b>10.75</b>	<b>6766</b>	<b>956.74</b>

# SUBSTANCE USE



Drug Overdose Deaths, Polk County - Age-Adjusted Death Rate per 100,000 Population

Source: FLHealthCHARTS, Florida Department of Law Enforcement



# SUICIDES BY AGE GROUP

---

## Suicides by Age Group Polk 2020

---

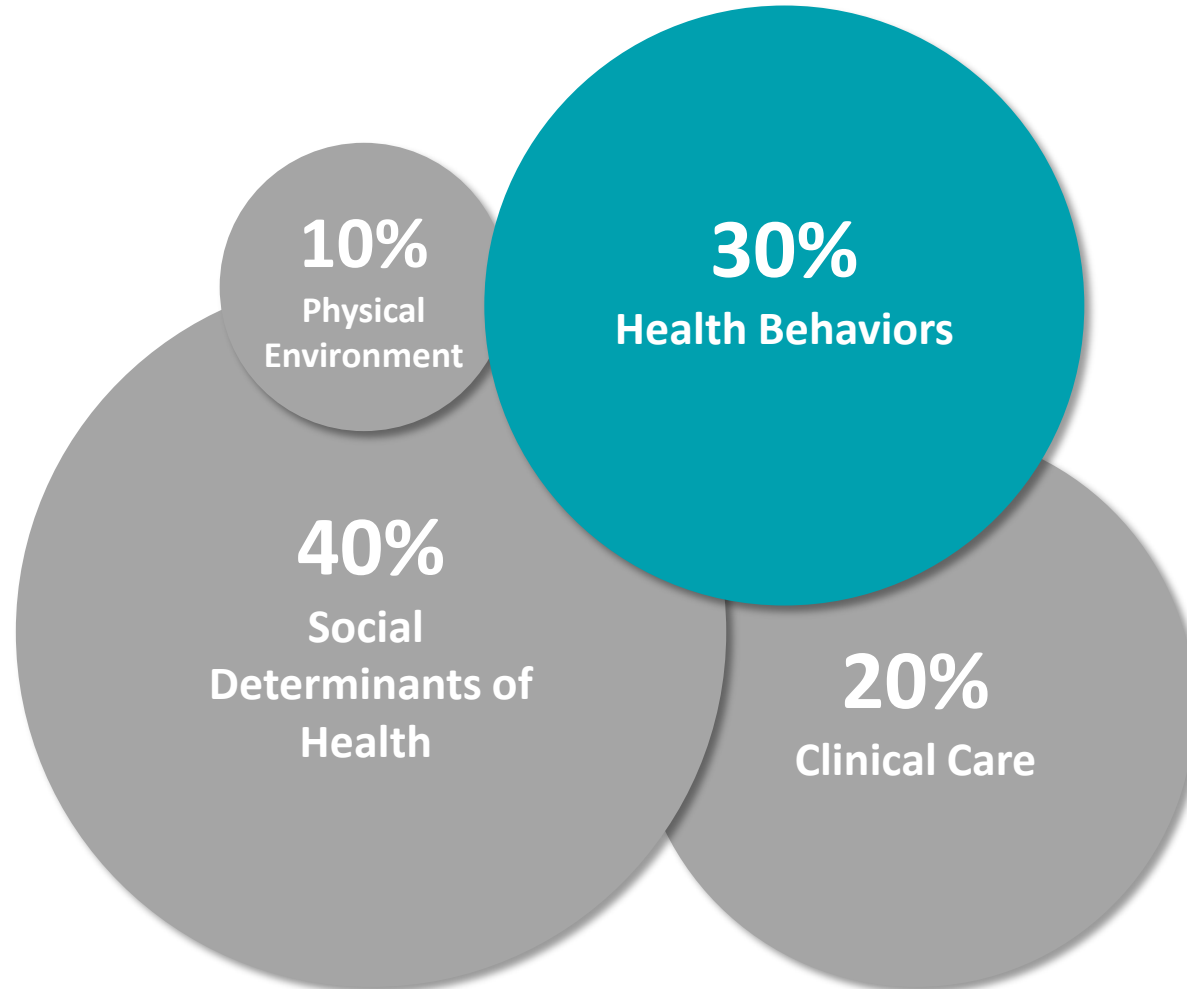
Age 10 – 19	2
Age 20 – 44	37
Age 45 – 64	38
Age 65 – 84	15
Age 85+	2
Total	94

---

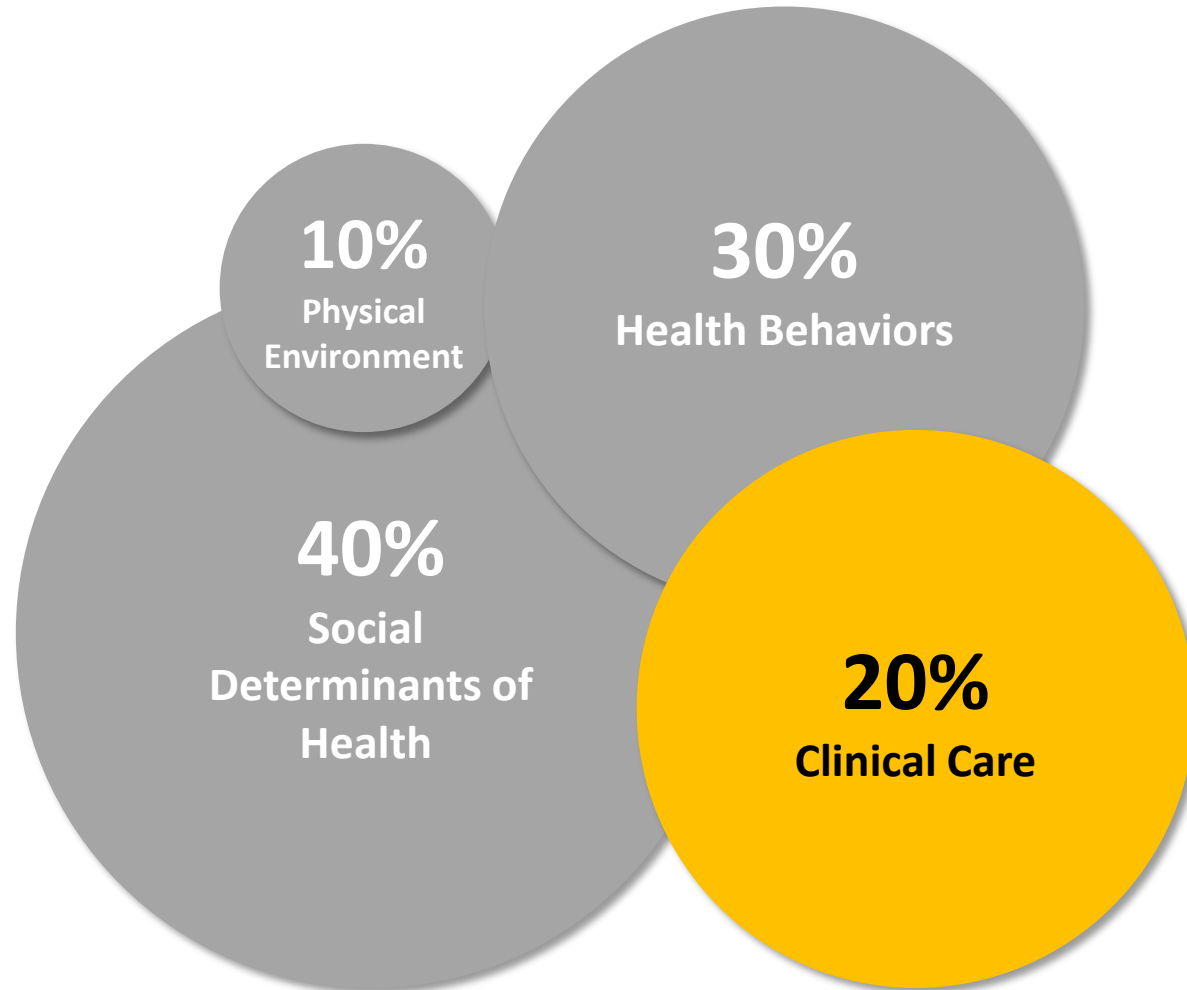
# ROBERT WOODS JOHNSON, COUNTY HEALTH RANKINGS AND ROADMAPS - POPULATION HEALTH MODEL

- Health Outcomes
  - Length of life
  - Quality of life
- Health Factors - impact future health
  - Health behaviors
  - Clinical care
  - Physical environment
  - Social determinants of health – where we live, work, play, socialize impacts our health

# HEALTH FACTORS THAT IMPACT HEALTH OUTCOMES

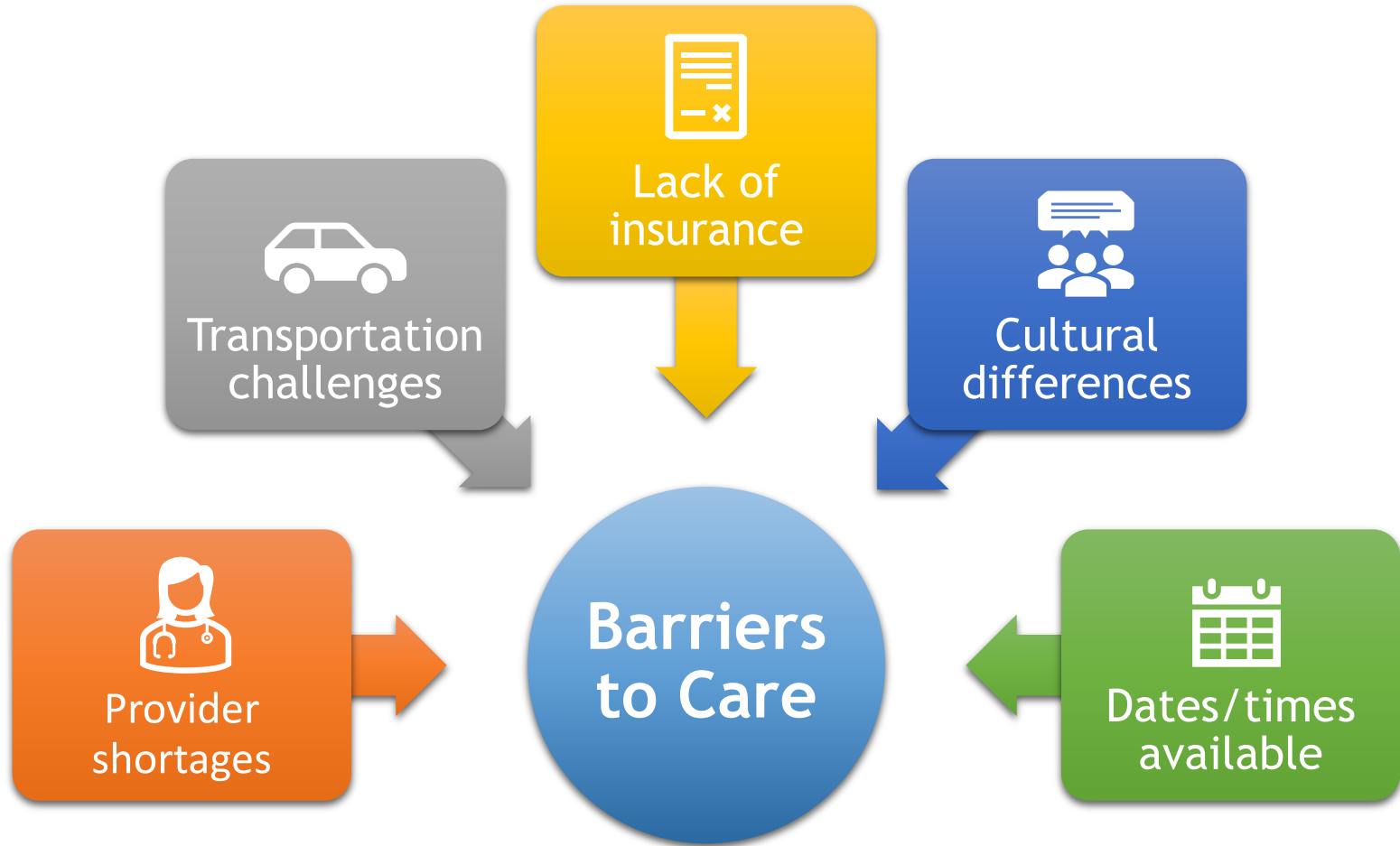


# HEALTH FACTORS THAT IMPACT HEALTH OUTCOMES

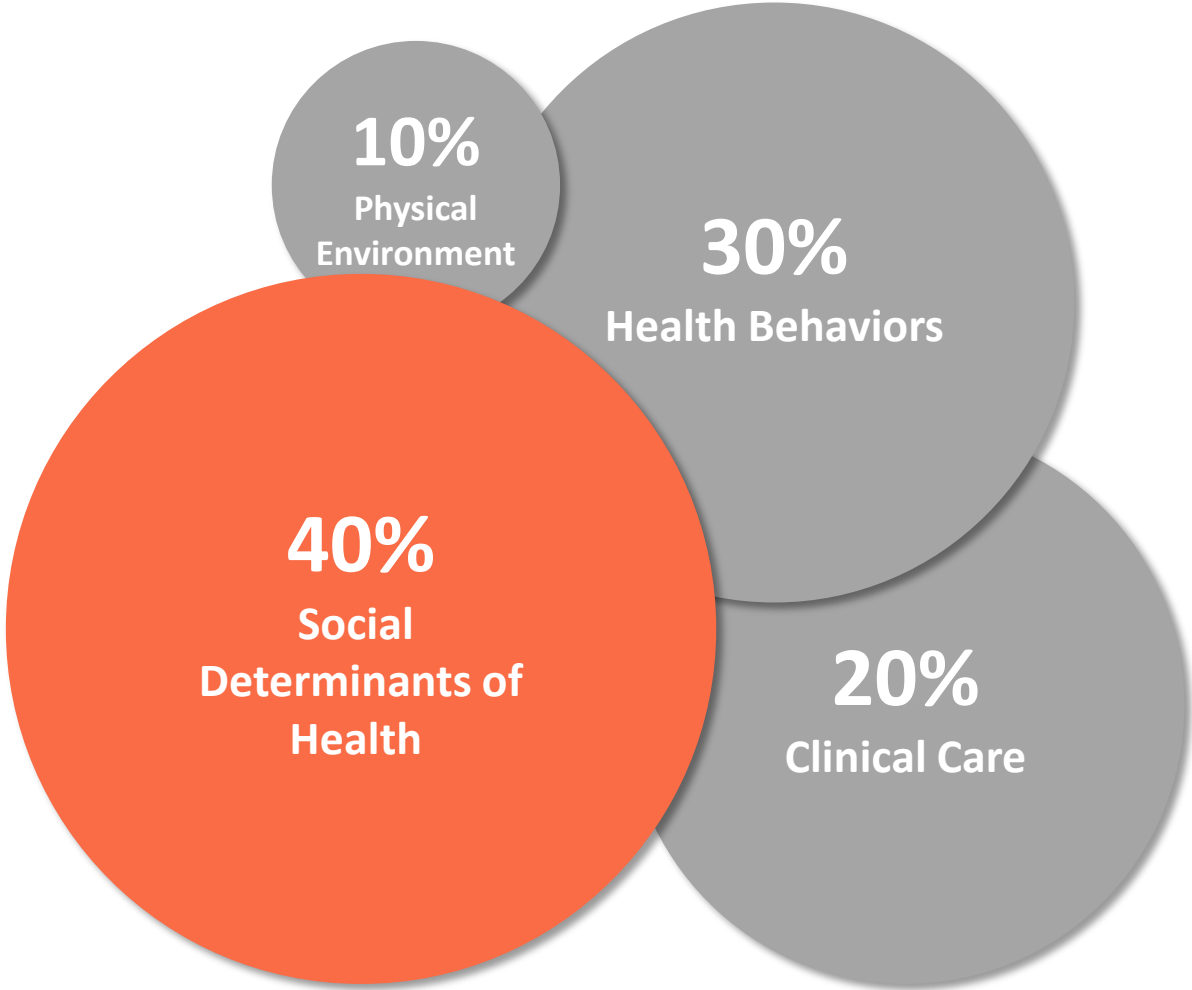


# ACCESS TO CARE

20%  
Clinical  
Care



# HEALTH FACTORS THAT IMPACT HEALTH OUTCOMES



# SOCIAL DETERMINANTS OF HEALTH

40%  
Social  
Determinants  
of Health



# HEALTH EQUALITY VS EQUITY

## Equality



## Equity





# WHAT IS POLK DOING TO ADDRESS THESE ISSUES

**Behavioral  
Health Team**

**Food  
Security  
Council**

**Health Equity  
Task Force**

**Black Infant  
Mortality**

**Opioid  
abatement**

**Polk Vision and other  
partners – alignment  
for community  
collaboration**

# THE FUTURE

- Will require continued listening, collaboration, and alignment as we work together to solve complex issues that impact the health and well being of our citizens.
- Polk does this exceptionally well.

# THE PANDEMIC

- COVID-19 has made a huge impact on our population since the first case was detected in Polk in March 2020.
  - >200,000 infections in Polk
  - 3,000 deaths
  - 63% of the eligible population has received a vaccine
- The local response has demonstrated a tremendous collaboration between hospitals, healthcare providers and facilities, pharmacies, county, city and state governments, emergency management, churches, all first responders, schools, colleges, COVID testing operations, agriculture worker associations, social service agencies, child and family protective organizations, communities, and individuals.

# Questions